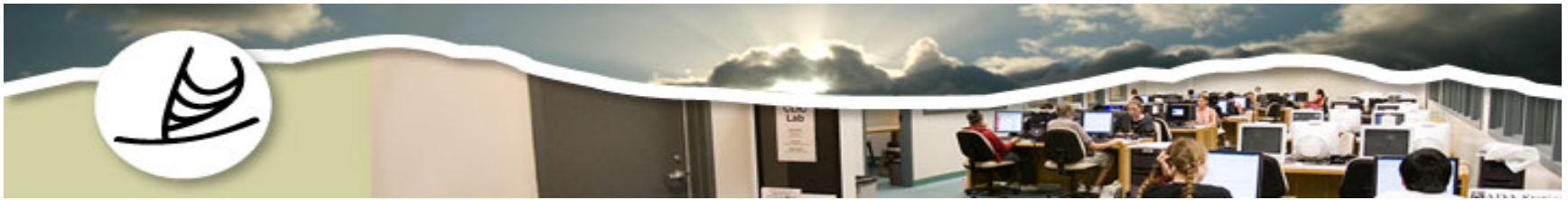




Images of Generations Past Retell Stories for Future Generations: University of Hawaii at Manoa Library

- Genealogy of a Scroll and an Old Book, 1710-2010 – Paula Mochida
- Discovery, Preservation, and Access to the Past: Magic Lantern Slides at the UHM Library – Tokiko Bazzell
- Crowd-Sourcing Our Sea of Islands: Enhancing Online Collections by Enabling Community Feedback – Stu Dawrs



"Genealogy of a Scroll and an Old Book, 1710-2010"

Paula Mochida

University Librarian

University of Hawai'i at Manoa Library

Slides prepared by Tokiko Y. Bazzell

Japan Studies Librarian

"Libraries and Discovery in the Pacific Century" PRDLA 2011



Frank Hawley

フランク・ホーレー

- Born in 1906, England 英国で誕生
- Came to Japan in 1931 as an English teacher
- Imprisoned in 1945, back in England during World War II
- Back in Japan in 1946
- Worked for *the Times*, British newspaper, 1946-1952
- Died on January 10, 1961, Kyoto, Japan 京都没

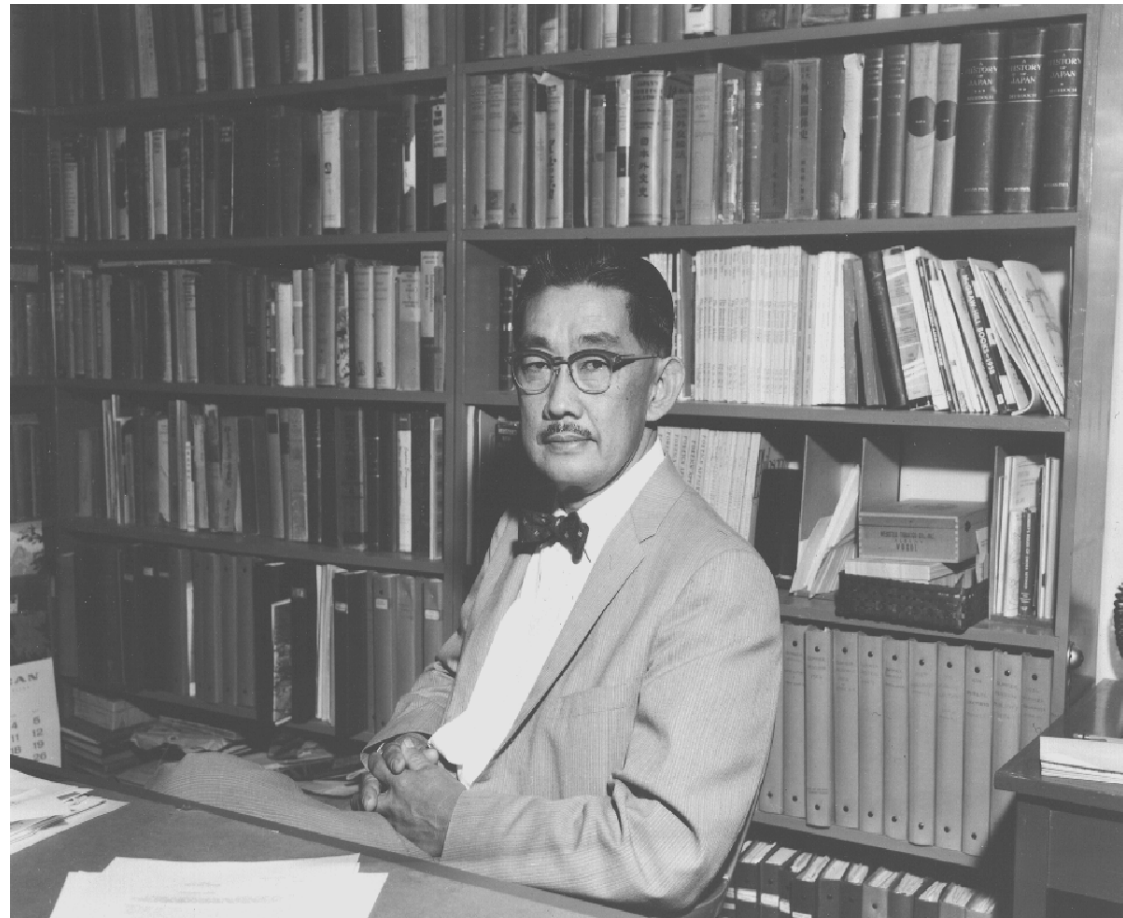
Frank Hawley Collection



Shunzo Sakamaki 1906-1973 坂巻駿三

- History professor at UHM ハワイ大学歴史学
- Dean of Summer School

1955-1971

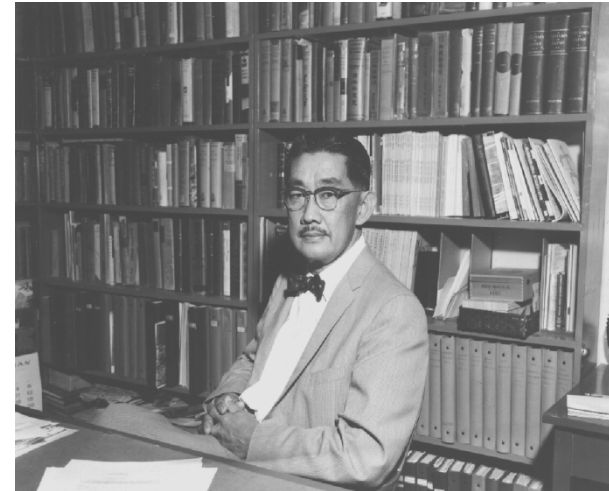


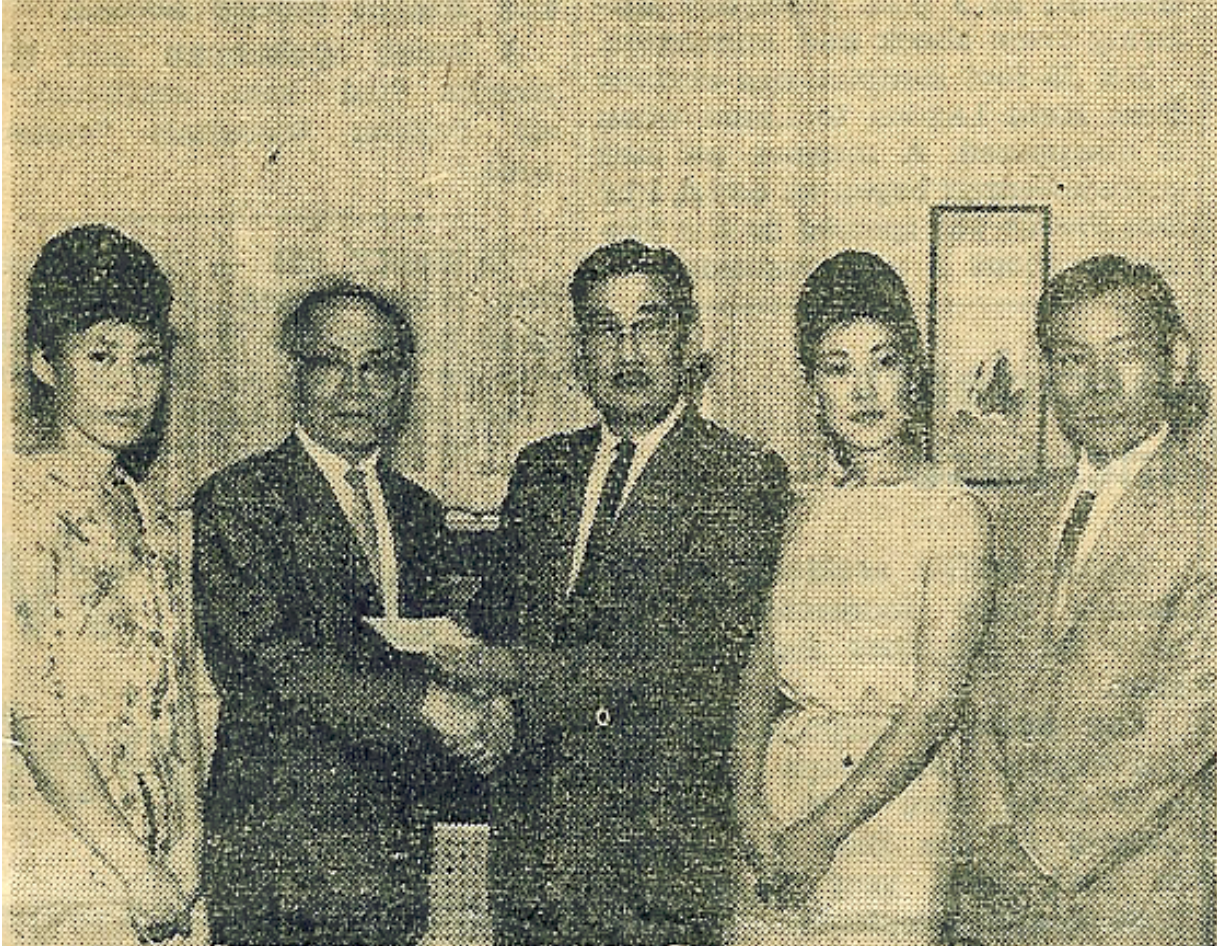
Jan. 10, 1961 Sakamaki left for Japan

“to arrange for the purchase of written materials on Ryukyu, so that a good library collection may be acquired, for study and research.”

(Memorandum to the Governor 1/5/61)

研究に役立つ文献収集を目指し日本へ出立





Yuko Majikina (second from left) leader of the Majikina dance Troupe of Okinawa, presents a check for \$1,000 to Dr. Shunzo Sakamaki, director of the University of Hawaii Ryukuan Research Library. Majikina and his children, Yoshinae (left) and Mrs. Yoshino Nakasone, and Yoshikuni (right) gave three benefit performances at Kennedy Theatre on July 31, August 1 and 2 for the library.

(HAWAII HOCHI PHOTO BY RON MATSUMURA)

8-25-64



4/21/62
 (Hawaii Times)
 フイマカアラから 布大沖繩圖書館
 へ寄附—フイマカアラでは先きに『オキナワス』
 の墓金映畫を上映し純益一千三百九十一弗三十一仙
 をハワイ大學沖繩圖書館へ寄附した、寫眞は贈呈式、
 左より右へ、ダイナマイト澤岬徳一、レイノルド・
 S 照屋、阪巻駿三博士、バトリック・Y 新垣、マイ
 ク・K 島袋の諸氏



About

Collections

Digital Archives

Links

Donations

FAQs

Okinawa Collection Home > Collections > Sakamaki/Hawley Collection

- About
- Access Policy
- Title List
- Resources
- Digital Archives
- Donations

Collection Overview ■■■

The Sakamaki/Hawley Collection has over 5,000 items, mostly consisting of Ryukyu source materials. The Ryukyu materials (over 2,000 copies/936 items) were collected by the late English journalist Frank Hawley (1906-1961) and it is complemented by the personal collection of former University of Hawaii professor Shunzo Sakamaki. When Frank Hawley died in 1961, Prof. Sakamaki contacted the family and started negotiating the purchase of the collection. Aided by donations from the United Okinawan Association of Hawaii, the University was able to purchase Hawley's Ryukyu collection.

To learn more about Shunzo Sakamaki, click [here](#)

About Sakamaki/Hawley Collection

The Sakamaki/Hawley Collection contains many materials dating from the 1400s to the 1960s about the Ryukyus and Okinawa. Frank Hawley collected over 2,000 items during his 30 years of living in Japan. The majority of the items are in Japanese, but there are also materials in various European languages, Chinese, and Ryukyuan language (Uchinaguchi). The collections are in different...[Read More](#)

! Access Policy

To access materials in the Sakamaki/Hawley Collection at site, please read the [Access Policy](#) and make an appointment in advance.

ハワイ大学マノア校図書館
沖縄コレクション
サカマキ・ホーレーコレクション



Robert Huey



Leon Serafim



Ed Kuba



Gay Satsuma



Robert Nakasone



Ned Schultz

Sakamaki Hawley Collection Digital Archives

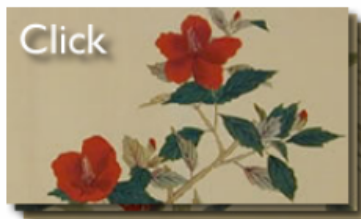
[Okinawa Collection Home](#) > [Collections](#) > [Sakamaki/Hawley Collection](#) > [Digital Archives](#)

Genres: [Scrolls](#) | [Books](#) | [Woodblock Prints](#) | [Maps](#) | [Manuscripts](#) | [Journals](#)

Five scrolls and two books are currently available in digitized format.

Please be aware that using any materials of our digital archives without permission is prohibited by law.

Scrolls



Chuzan Kaboku-zu

中山花木図

(Drawings of flowers and trees in Chuzan)

1762.

By Kaisai, Guki, based on the original drawings by Kimura, Tange Hand scroll; ink, color, gold on washi Silk string (70.7cm) 71.2cm X 986.5cm

Kimura Tange (1679-1767) originally dedicated two scrolls early 1700s: one was for Konoe-ke (Konoe Clan) and the other to Shimazu-ke (Shimazu Clan). However, these originals do not exist anymore. Based on these scrolls, some hand copied drawings were made. There are seven such scrolls identified: one is in [Okinawa](#), one in [Nishio-city](#), four at the private library run by [the Takeda Science Foundation](#) in Osaka, and in the Hawley Collection.

The Hawley collection's scroll contains 16 plants. We believe but have not confirmed yet that this scroll might have been copied from the both the Shimazu Clan's scroll and the Konoe Clan's scroll. In order to confirm this hypothesis, we need to examine the remaining scroll at the Takeda Science Foundation in Osaka, Japan. Related Article Shibata, Mitsuhiko, A New study of the Chuzan Kaboku-zu: on the poetry of Tei Junsoku-From the book of the Sakamaki/Hawley Collection held at the University of Hawaii at Manoa Library and the book of properties of the Shuri Castle Park. In Okinawagaku, vol. 10, March 2007.



Ryukyu-jin tojo no gyoretsu

琉球人登城之行列

(Procession of Ryukyuan Enroute to Edo Castle)

The restoration work was conducted by the museum's conservator in Japan. To learn about preservation effort on this scroll, please take a look at [Preservation Efforts](#) article.

中山花木図

(Drawings of flowers and trees in Chuzan)

1782

Konoe Clan's scroll. In order to confirm this hypothesis, we need to examine the remaining scroll at the Takeda Science Foundation in Osaka, Japan. Related Article Shibata, Mitsuhiro, A New study of the Chuzan Kaboku-zu: on the poetry of Tei Iunsoku. From the book of the Sakamaki/Hawley Collection held at the University of



Ryukyu shisha kin oji shusshi no gyoretsu
1671

Unknown Artist
216 inch long scroll

Please click right corner of the image to go to the next image

Image 1 of 8

CLOSE X

Ryukyu Shisha Kin Oji Shusshi no
Gyoretsu

琉球使者金武王子出仕之行列

(Procession of the Ryukyu

Kingdom's Prince Kin to the Edo

**Uchima Ansho, the 1st
Uchima to Hawaii一世**

1891 Born in Misato-son
美里村生

1906 Moved to Hawaii
(Big Island)

1913 Married Kamado
Kina

1923 Relocated to Oahu

1934 Died at 43 years old

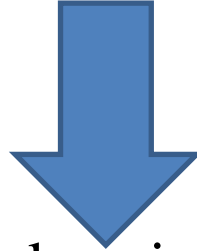


Ansho (1st son)



1906 Moved to Hawaii
1913 Married & 9
children
1934 Passed away

Anko (2nd son) 2 sisters (Ushi & Makatei)



Safe keeping of the document

Ansho (1st son)

Anko (2nd son) 2 sisters (Ushi & Makatei)

1906 Moved to Hawaii
1913 Married & 9
children
1934 Passed away

Safe keeping of the document

1961 the doc to Hawaii along with okotsu,
the doc was left with his daughter while
okotsu was interred to Moiliili

1993 the doc was left with
Roy (Ansho's 1st son)

2000 handed over to
Jessie (Ansho's daughter),
then to Lucie (Jessie's
daughter

2007 met Prof. Yamazato (distant
relative in Okinawa), who
introduced the Uchimas to Bazzell



山里琉球大学教授とハワイ大学図書館スペシャリスト



Ansho (1st son)

Anko (2nd son) 2 sisters (Ushi & Makatei)

1906 Moved to Hawaii
1913 Married & 9
children
1934 Passed away

Safe keeping of the document

1961 the doc to Hawaii along with okotsu,
the doc was left with his daughter while
okotsu was interred to Moiliili

1993 the doc was left with
Roy (Ansho's 1st son)

2007 met Prof. Yamazato (distant
relative in Okinawa), who
introduced the Uchima to Bazzell

2000 handed over to
Jessie (Ansho's daughter),
then to Lucie (Jessie's
daughter)

**2010 donated to the UHM
Library 図書館へ寄贈**

Uchima Document 内間家譜





県立沖縄博物館関係者・修復師へ家譜修復を託す

中山花木図

(Drawings of flowers and trees in Chuzan)

1762.

By Kaisai, Guki, based on the original drawings by Kimura, Tange Hand scroll; ink, color, gold on washi Silk string (70.7cm) 31.2cm X 986.5cm

Konoe Clan's scroll. In order to confirm this hypothesis, we need to examine the remaining scroll at the Takeda Science Foundation in Osaka, Japan. Related Article Shibata, Mitsuhiro, A New study of the Chuzan Kaboku-zu: on the poetry of Tei Junsoku-From the book of the Sakamaki/Hawley Collection held at the University of Hawaii at Manoa Library and the book of properties of the Shuri Castle Park. In Okinawagaku, vol. 10, March 2007.



Ryukyu-jin tojo no gyogetsu

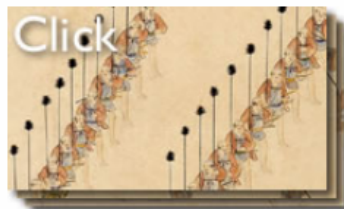
琉球人登城之行列

(Procession of Ryukyuan Enroute to Edo Castle)

1710

Unknown artist. Two scrolls. 27x1,915 cm & 27x1,867 cm

The restoration work was conducted by the museum's conservator in Japan. To learn about preservation effort on this scroll, please take a look at [Preservation Efforts](#) article.



Ryukyu Shisha Kin Oji Shusshi no Gyogetsu

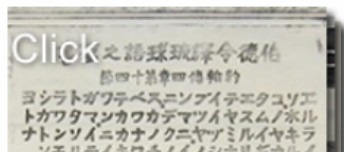
琉球使者金武王子出仕之行列

(Procession of the Ryukyu Kingdom's Prince Kin to the Edo Castle.)

1771

Unknown artist. 216 inch long scroll

The restoration and digitization of the 360 year old scroll was conducted through the collaboration between Hawaii and [Okinawa Prefectural Museum & Art Museum](#) in Okinawa. To learn about preservation effort on this scroll, please take a look at [Preservation Efforts](#) article.



Bernard J. Bettelheim worked in Okinawa from 1846 to 1854 as a missionary, doctor, translator of the Bible, and interpreter to Commodore Perry. In 1926, the Monument for Bettelheim was erected at Gokokuji, where he lived for eight years. The monument was destroyed during World War II.

According to the Japan Advertiser, the monument was 14 feet high. It included 10

OKINAWA COLLECTION

Digital Archives

日本語 | Asia Collection Home | UHM Library Home | Site Map

Copyright © 2009 University of Hawaii at Manoa. All rights reserved.



NEXT

Ryukyu-jin tojo no gyoretsu
1710Unknown artist
Two scrolls. 27x1,975 cm and 27x1,867 cmPlease click right corner of the image to go to the next image
Image 1 of 36

CLOSE X

drawings by Kimura, Tange Hand scroll,
ink, color, gold on washi Silk string
(70.7cm) 31.2cm X 986.5cm

Okinawagaku, vol. 10, March 2007.

The restoration work was conducted by the museum's conservator in Japan. To learn about preservation effort on this scroll, please take a look at [Preservation Efforts](#) article.

OKINAWA COLLECTION

Digital Archives

日本語 | Asia Collection Home | UHM Library Home | Site Map

Copyright © 2009 University of Hawaii at Manoa. All rights reserved.



Ryukyu-jin tojo no gyoretsu
1710

Unknown artist
Two scrolls. 27x1,975 cm and 27x1,867 cm

Please click right corner of the image to go to the next image

Image 25 of 36

CLOSE X

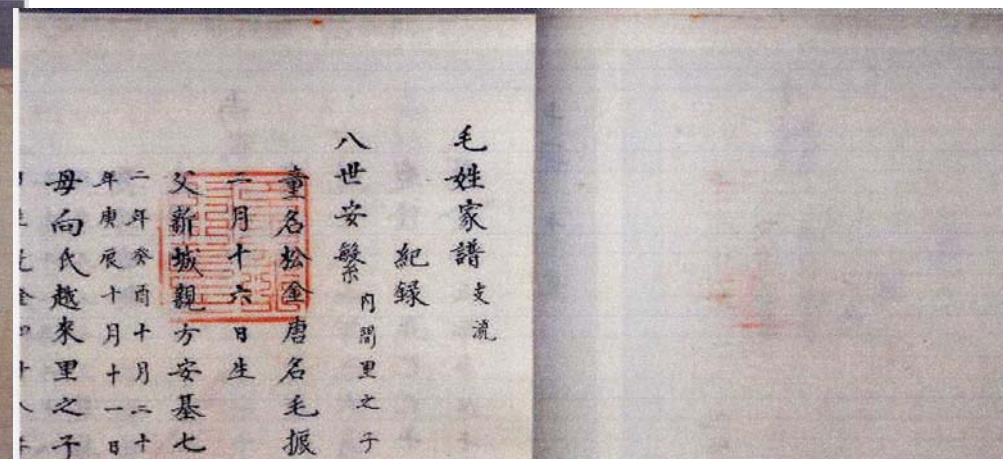
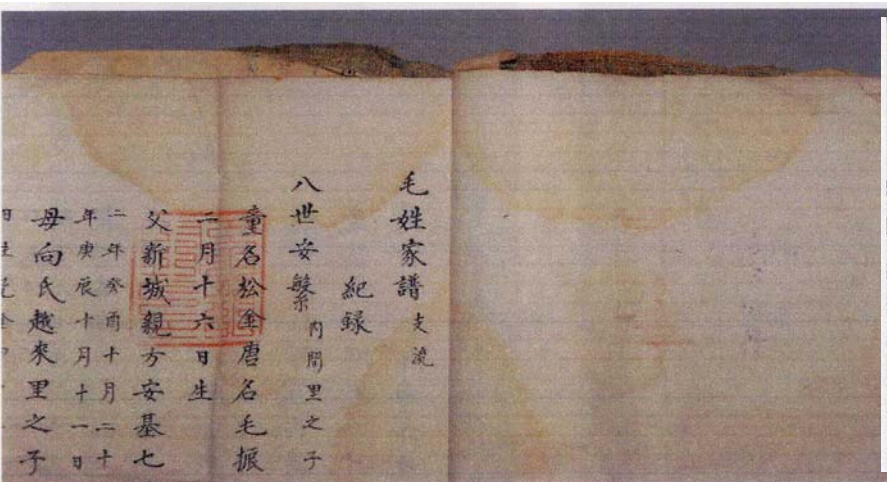
drawings by Kimura, Tange Hand scroll;
ink, color, gold on washi Silk string
(70.7cm) 31.2cm X 986.5cm

Okinawagaku, vol. 10, March 2007.

The restoration work was conducted by the museum's conservator in Japan. To learn about preservation effort on this scroll, please take a look at [Preservation Efforts](#) article.











イッペーニフエーデービル
Mahalo ムハロ
有難うございました
Thank you very much



About

Collections

Digital Archives

Links

Donations

FAQs

News & Events

Upcoming Events/information on UHM

Check and see the Library's new DVD series on Okinawa, "Wonder Okinawa 沖縄" series. Example: [Kumiodori no sekai miru, kiku, yomu. 組踊りの世界 観る、聞く、読む](#)

Find Books and Journals at UH?

- [Library Guides: Introduction to Okinawan Studies](#)
- [Other Japanese Language Newspaper Holdings](#)
- [Journal Article on Ryukyu/Okinawa Search](#)
- [Books in Japanese and English](#)
- [Monthly Japanese Language New Aquisition List](#)

Search Site

Go

Contact: Tokiko Y. Bazzell
Japan Specialist
Email: tokiko@hawaii.edu
Phn: 808-956-2315

Okinawa Newspaper Holdings

[Okinawa Times Database \(沖縄タイムスデータベース\)](#)

****UHM Access Only****

1971-present, Searchable full-texts database

1948, 1951-1971, 1992-1993

Shinbun Kiji Sakuin 1950-1970 Microfilm [D90002](#)

[Ryukyu Shinpo \(琉球新報\)](#)

1945-May 1998, May 2001-2007 (DVD Ask the Library),
2008-present

Shinbun Kiji Sakuin 1950-1970 Microfilm [D90003](#)

Resources