

Engaging Faculty and Studies in the Digital Research Process

Gary E. Strong

University Librarian at UCLA

Peking University Library 110th Anniversary
Celebration & PRDLA

November 2012

Engage Faculty & Students in Library Research Commons

- Collaborative, interdisciplinary space with robust technology and a variety of gathering spaces, including remote access and conferencing
- Support the whole life-cycle of research
- User-driven usage drawing on extensive and rich library resources and data
- Ability to capture and record versions, snapshots, and product (publications, exhibits, versions) throughout the creative process

UCLA NEH Summer Institute – Digital Cultural Mapping

- Targets scholars at all stages of their careers who are actively engaged in digitally enable research
- Those who are preparing digital publications and/or teaching courses that rely on geotemporal analysis and argumentation
- Opportunity to work closely with faculty and staff
- The UCLA Library was a full partner and hosted the sessions
- Brought 12 participants from 9 universities and three independent humanities scholars, plus UCLA faculty and visiting presenters



The ABCs of the CBC

- Engages graduate students in using Islandora to develop an interactive on-line exhibition exploring children's books
- It is an exhibit inside of a textbook
- It's not about use, but about building and making new resources
- Draws on the resources of Library Special Collections and engages with original artifacts

THE A-B-CS OF THE CBC

Username

Password

Log in

A PRETTY PLAY-THING FOR CHILDREN OF ALL DENOMINATIONS (1759)



TABLE OF CONTENTS

[Introduction](#)
[Literacy](#)
[Childhood](#)
[Printing](#)
[Publishing](#)
[history](#)
[Cultural](#)
[iconography](#)
[Spotlight](#)
[Syllabus](#)
[Catalog](#)
["Everything"](#)
[Metadata links](#)

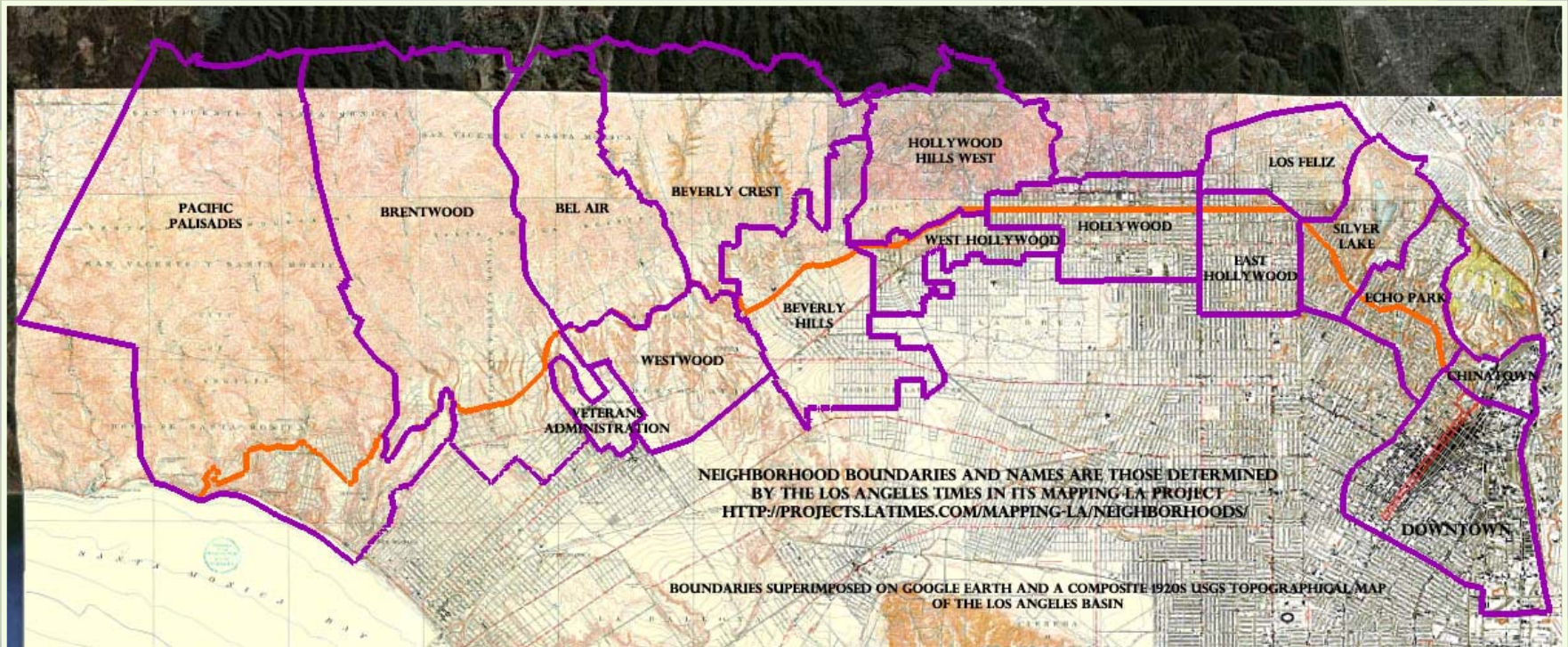
PRESENTATION

[Childhood](#)
[Literacy](#)
[Printing](#)
[Publishing](#)
[Cultural](#)
[iconography](#)

Moves inside the text to explore

- Childhood
- Literacy
- Printing
- Publishing
- History
- Cultural
- Iconography

Seeing Sunset, Learning Los Angeles



A guide prepared for Students in GE66, LA: the Cluster University of California, Los Angeles

Janice L. Reiff, editor

A joint production of Jan Reiff, Dell Upton and the Sunset Boulevard Summer Knowledge Design Research Team: Melanie Arias, Max D. Baumgarten, Erin Coleman, and Diane Ward with the generous assistance of the rest of the Summer Knowledge Design Team, the Digital Library team of the UCLA Library, and the Office of Instructional Development

Proposal (Spring 2012)

“textbook” to accompany students’ actual exploration of Los Angeles via the Sunset Boulevard bus that can initially be accessed in print and digital forms and that eventually will be available through the UCLA library’s Digital Library platform

- historical overview of each community through which the bus travels
- guide to points of interest in those communities that reveal insights into the city’s development or contemporary issues
- guide to research resources available at UCLA and elsewhere

Design and Research (Summer 2012)

ten-week studio, two faculty, two project (Sunset and Baltimore Signage), fourteen students (graduate and undergraduates) from history, geography, urban planning, information studies, digital humanities, design|media arts, political science; research space, digital resources, staff support on Islandora provided by UCLA Library

Instructional test phase (Fall 2012)

pdf and interactive map access available through class web site; student assignments based on actual bus rides, materials in the Sunset text, and student research; four “embedded” librarians

Evaluation phase (Winter 2013)

student focus groups on content, design, access

Islandora implementation stage (Spring/Summer 2013)

Link to Seeing Sunset: Learning Los Angeles Textbook on class web site

[Introductory Materials](#) (read first) [Interactive Map of Sunset](#)

Pacific Palisades

[Historical Overview](#)
[Points of Interest](#)
[Map -- 1928 USGS](#)

Brentwood

[Historical Overview](#)
[Points of Interest](#)
[Map](#)

Veterans Administration

[Historical Overview](#)
[Points of Interest](#)
[Map](#)

Bel Air

[Historical Overview](#)
[Points of Interest](#)
[Map](#)

Westwood

[Historical Overview](#)
[Points of Interest](#)
[Map](#)

Beverly Crest

[Historical Overview](#)
[Points of Interest](#)
[Map](#)

Beverly Hills

[Historical Overview](#)
[Points of Interest](#)
[Map](#)

Hollywood Hills West

West Hollywood

[Historical Overview](#)
[Points of Interest](#)
[Map](#)

Hollywood

[Historical Overview](#)
[Points of Interest](#)
[Map](#)

East Hollywood

[Historical Overview](#)
[Points of Interest](#)
[Map](#)

Los Feliz

[Historical Overview](#)
[Points of Interest](#)
[Map](#)

Edendale/Silver Lake

[Historical Overview-Edendale](#)
[Points of Interest](#)
[Map](#)

Edendale/Echo Park

[Historical Overview-Edendale](#)
[Points of Interest](#)
[Map](#)

Chinatown

[Historical Overview](#)
[Points of Interest](#)
[Map](#)

Downtown

Introductory information for historical overview

Example of point of interest text

Note links to external research resources for students

HISTORIC EDENDALE



For a profile of Silver Lake today,
see the *Los Angeles Times*' Mapping L.A. project at
<http://projects.latimes.com/mapping-la/neighborhoods/neighborhood/silver-lake/>
For a profile of Echo Park today,
see the *Los Angeles Times*' Mapping L.A. project at
<http://projects.latimes.com/mapping-la/neighborhoods/neighborhood/echo-park/>

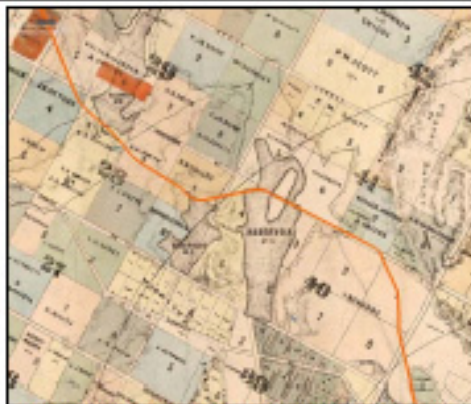
Primary Author: Max D. Baumgarten

BUS

NOTES: The 2/302 bus makes frequent stops through Silver Lake and the neighborhood directly to the east, Echo Park. Silver Lake and Echo Park – particularly near the Sunset Junction district, the intersection of Sunset and Alvarado, and the intersection of Sunset and Echo Park Avenue – are good places to get off the bus, people watch, grab a bite to eat, and use a restroom. Be aware that if you disembark in Silver Lake and later decide to continue taking the bus eastward, buses marked Alvarado will not go all the way downtown but will stop at Alvarado and Sunset in Echo Park. The bus driver will be helpful in answering questions about the bus route.

SUNSET

NOTES: Sunset Boulevard went through many transformations as it stretched from Downtown to Hollywood. Before Reservoir #4 was transformed into Echo Park Lake, the property on which the road now runs lay under the reservoir. In 1886, the creation of Elysian Park led city officials to improve Elysian Park Avenue to make it possible for residents to get to the park. Some of that roadway eventually became part of what is now Sunset Boulevard. Late that summer, the City Council granted a franchise to the Ostrich Farm Railway to lay a one-line iron track on which a car would run to take Angelenos from downtown to the Ostrich Farm in Los Feliz. That route, from the center line of Elysian Park Avenue "to Reservoir street; across Reservoir street, at a point at or near where Elysian Park avenue intersects Reservoir street; across Alvarado street junction; across



1884 Cadastral Map of Los Angeles, Stevenson, H. J., Compiler
Special Collections, Young Research Library, UCLA
<http://content.cdlib.org/ark:/13030/hb5x200ad/?query=1884%2>

PACIFIC PALISADES



POINTS OF INTEREST

- 1 Paul Revere Charter Middle School and Magnet Center, 1450 Allenford Drive



Meeting at the Board of Education, 26 May 1952
Demonstration by Brentwood, Pacific Palisades and
Canyon Schools Committee (Yes on Propositions for School
Bonds)

Photographer: Miller, LA Examiner Negatives Collection
USC Digital Archives
<http://digital.library.usc.edu/archive/control/view/11331-2-0987-017-4>
<http://digital.library.usc.edu/search/control/view/1000111603.html?w=1348685214099>

Both the rapid development on the West Side and the baby boom made schools a pressing issue across the area. Paul Revere (former the Palisades-Brentwood Junior High School) was born out of those pressures. Residents began lobbying for new schools in the late 1940s and advocated that the parking spaces and practice polo grounds of the Riviera Country Club ought to be claimed by the right of eminent domain for a new school. By 1952, they lobbied for the passage of a massive school bond issue to build at junior high school for the estimated 1,100 children living in the area between the Pacific, San Vicente, Sepulveda, and the foothills. In 1955, the new school (quickly renamed the Paul Revere Junior High School) opened its doors.

Conveniently located between the Pacific Palisades and Brentwood,

Revere's location makes it vulnerable to a number of environmental assaults. Between Sunset and the school you may notice a waterway that channels water runoff from the canyons north of it to the Riviera Country Club. When fires break out in the nearby hills, Revere serves as a temporary shelter. It experienced its own ecological disaster in 1970 when a high-pressure oil line under the school burst, flooding school parking lots and nearby streets and isolating students inside.

Revere was also a key school in Los Angeles Unified School District's (LAUSD) court-mandated and voluntary efforts to end segregation and inequality. In the first year of the district's busing program, Revere was designated a midsize campus (reduced busing



1931 Map of Westwood & Holmby Hills from UCLA Library Digital Library Collection overlaid on class interactive map for Westwood point of interest 17, Hilgard/University Drive Entrance to UCLA; photo is being delivered from the Los Angeles Public Library Photo Collection at <http://jpg1.lapl.org/pics45/00042345.jpg>



W. M. Garland (realtor, insurance broker, rental agent) 1925 map entitled "The Heart of Downtown" from the UCLA Map Collection. Text from Downtown Point of Interest 12: Pershing Square

Library Initiatives – Simul8

- Conceived to operate like a start-up company, placing an emphasis on a flat team structure, and experimental/build-fast prototype mentality
- The charge is to innovate with technologies in order to create a more dynamic interaction for users of our collections, and create efficiencies in user/library workflows that enhance discover and user-curation of relevant content
- Create experiences that are simple, powerful, and useful across many devices and platforms
- Focus on building apps on web/mobile platforms that support search, discovery, and curation of library collections and electronic database materials
- Team of graduate students led by a library staff member

Transforming the Library Experience

- Focus on search and user-curation as well as extending the ULCLA across the most popular devices—iPhone, Android phones, and Tablets
- *Stashd* allows students and faculty to save online-offline research content with one click from their browser toolbar for later viewing
- *Scannr* is an app for capturing/uploading scans using a mobile camera

Kevin's Links

☐ Add ☐ Delete ☐ Label ▾

☒ Jonathan Ive interview: Apple

telegraph.co.uk - Stashed 0 minutes ago.

"We try to develop products that seem somehow inevitable. That leave you with the sense that that's the only possible solution that makes sense," he explains. "Our products are tools and we don't want design to get in the way. We're trying to bring simplicity and clarity, we're trying to order the products."
"I think subconsciously people are remarkably discerning. I think that they can sense care."

☐ State Department Chooses Amazon Kindle Ov...

informationweek.com - Stashed 4 minutes ago.

The State Department plans to award a contract to Amazon to purchase thousands of Kindle e-readers for use in its offices around the world.

☐ Chemistry you can dance to / UCLA Newsroom

newsroom.ucla.edu - Stashed 4 minutes ago.

UCLA psychobiology major Anantha Singarajah admits she disliked chemistry before taking professor Neil Garg's popular undergraduate organic chemistry course (Chemistry 14D) this quarter.

☐ VMware Embraces The BYOD Revolution -- Tr...

trefis.com - Stashed 3 days ago.

☐ JSTOR: Strategic Management Journal, Vol. 2...

jstor.org - Stashed 3 days ago.

SEARCH

BROWSE

Links

Books

Albums

LABELS

X ☐ cla

X ☐ perception

X ☐ class101

X ☐ jstor

X ☐ icon

X ☐ Q231

X ☐ BS

X ☐ VC

X ☐ patent

X ☐ rajiv

LOGO

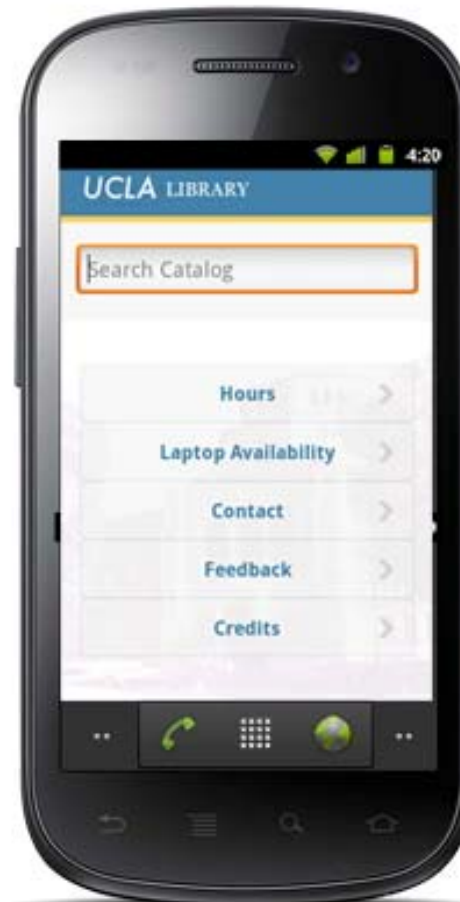
The UCLA Library Mobile App

- UCLA Library catalog search
- Item reviews
- Library Information
- Stashd
- Scannr
- Article search
- Autosuggest – search suggestions
- Item location maps

iPhone



Android



UCLA LIBRARY

Search Online Catalog

Hours

Laptops

Contacts

Feedback

Credits

UCLA LIBRARY

Kuhn

Keywords	Title	Author	Subject
----------	-------	--------	---------

✓	The Copernican revolution : planet...	Kuhn, Thomas S.	
---	--	-----------------	--

✓	The structure of scientific revolutio...	Kuhn, Thomas S.	
---	---	-----------------	--

✓	Walt Kuhn, 1877-1949.	Kuhn, Walt, 1877-1949.	
---	------------------------------	------------------------	--

✓	Stresses in aircraft and shell struct...	Kuhn, Paul, B.S. (Ae. E.)	
---	---	---------------------------	--

✓	Thomas Kuhn		
---	--------------------	--	--

✓	Buzzed : the straight facts about th...	Kuhn, Cynthia.	
---	--	----------------	--

✓	No stone unturned : the life and ti...	Kuhn, Maggie.	
---	---	---------------	--

✓	Walt Kuhn, 1877-1949; [a memorial...		
---	---	--	--

Back

View Book

Structure of Scientific Revolutions Enlarged

Kuhn, Thomas S.
1970]



Description

Introduction: A role for history -- The ro... >

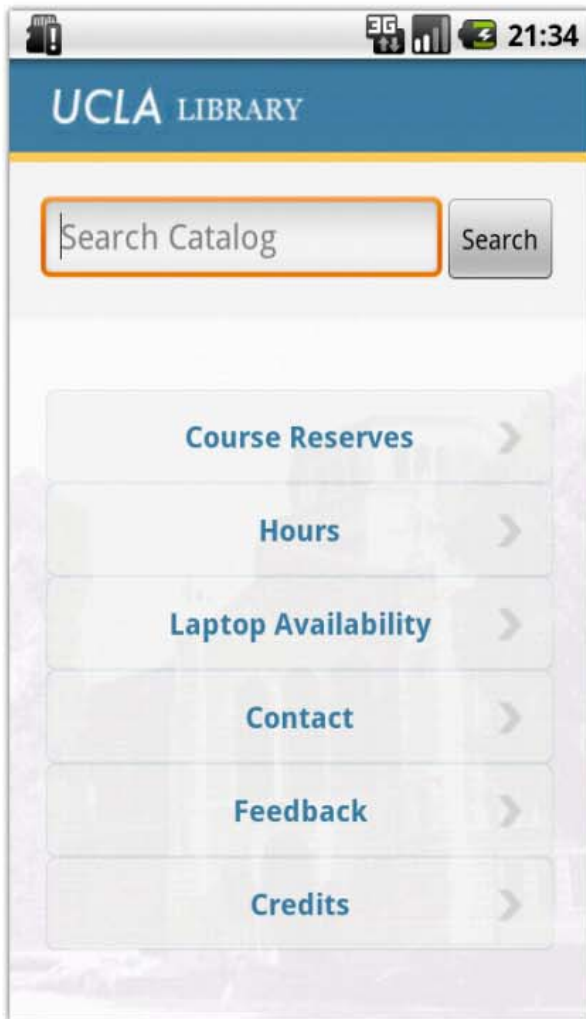
An analysis of the history of science. Its... >

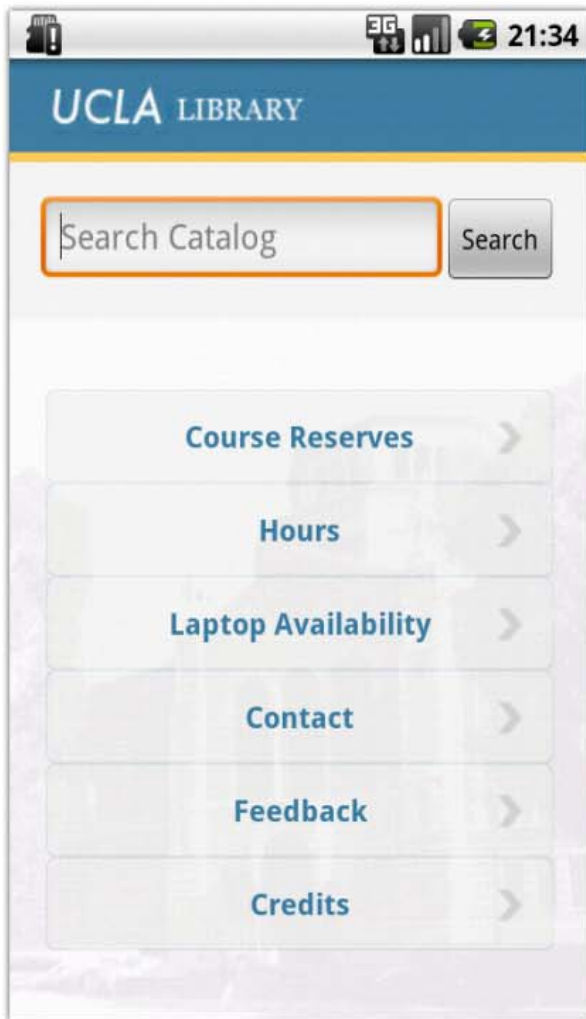
[2nd ed., enl.

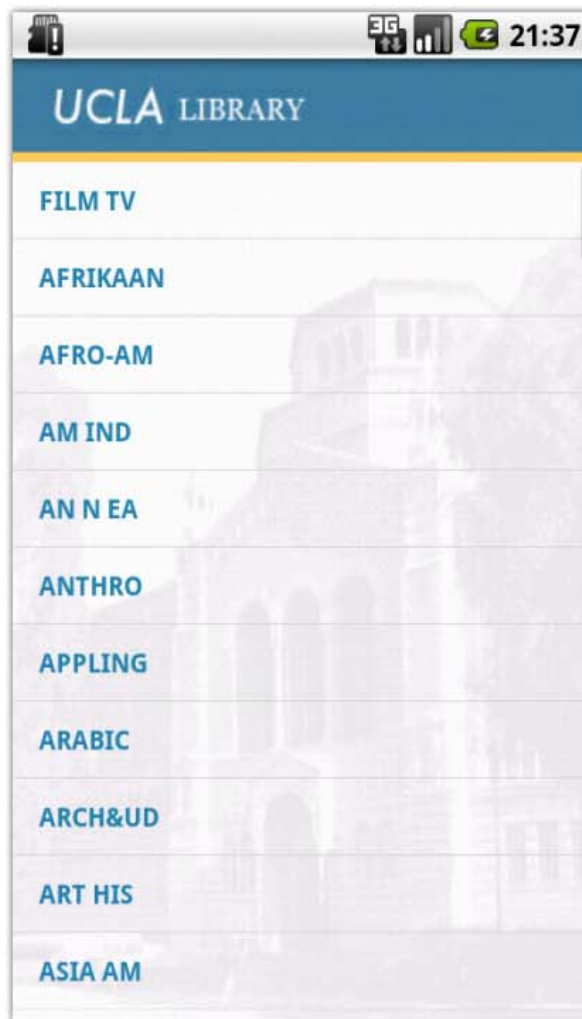
Availability

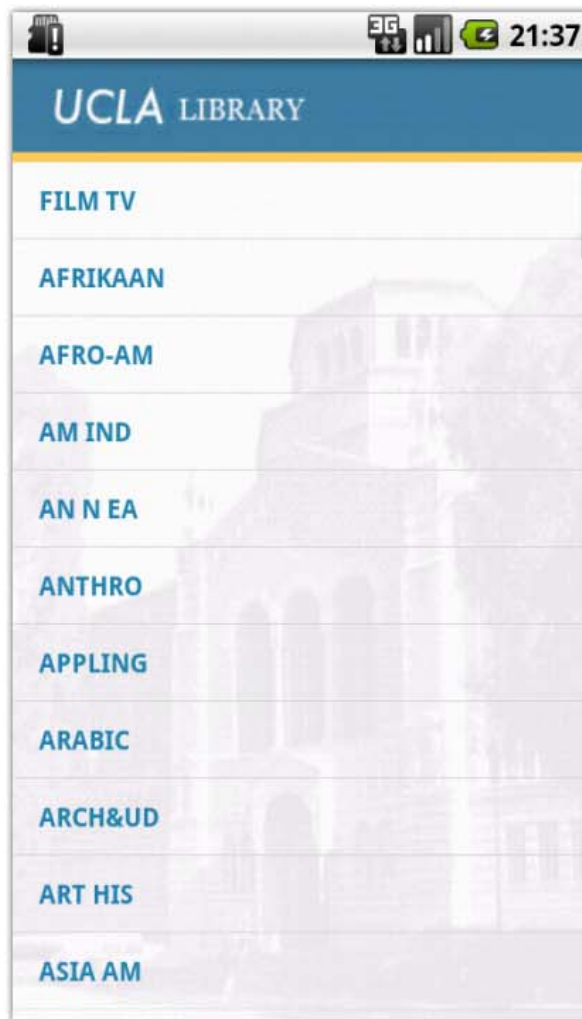
Arts Library Q175 .K955s 1970
Renewed - Due on 10-08-12

Biomed Library Q175 .K955s 1970













Scannr Mobile





articles.stashd.org/



Google

Search Results

× UCLA Library - Artic...

UCLA Library - Article...

How Keynesian Econo...



UCLA Library Apps



CATEGORIES

☒ General

☐ Arts & Humanities

☐ Business &

Economics

☐ Engineering & App

Sci

☐ Health & Life Sci.

☐ Phys. Sci. & Math

☐ Social Sciences

Article Search

Search for articles in UCLA Library's catalog

Title, keyword, or author

Search

Choose databases to search for on top

iPad

5:37 PM

73%

articles.stashd.org/

Google

Search Results

UCLA Library - Artic...

UCLA Library - Article...

How Keynesian Econo...

+

UCLA Library Apps

CATEGORIES

☒ General

☐ Arts & Humanities

☐ Business & Economics

☐ Engineering & App Sci

☐ Health & Life Sci.

☐ Phys. Sci. & Math

☐ Social Sciences

Article Search

Search for articles in UCLA Library's catalog

China economics

Search

Hungry China a healthy prospect for 15 years yet

Rollins, Adrian

The Economic Cooperation Framework Agreement between China and Taiwan: Understanding Its Economics and Politics

Hong, Tsai-Lung

World trade has become increasingly regionalized in the past decade as a result of preferential arrangements. Due to Taiwan's unique international political status, its present government believes that closer economic integration with China would enhance Taiwan's economic prosperity and prevent Taiwan from being marginalized in East Asia. Taiwan hence signed the Economic Cooperation Framework Agreement (ECFA) with China in 2010. This paper summarizes arguments opposed to the ECFA from economic and political perspectives. Despite the fact that Taiwan is expected to reap greater benefits from deeper integration with China, simulation analyses show that the welfare-enhancing effect brought about by the ECFA is quite limited, because the ECFA contains no definite content or timeline other than an early harvest list.

Health economics in China. Foreword.

Hsiao, W.C.

Economics, cultural transmission, and the dynamics of the sex ratio at birth in China.

Lipatov, M.

MOVING BUSINESS BEYOND BEIJING

RUDD, KEVIN

...means for the Australia-China economic relationship. It's what I call Australia-China 2.0. And the test is whether we share the economic vision to translate these ideas into.....story.

A market economics approach to taxation and regulation of non-profit organizations - Analyses and

Welcome, Kevin!!!

NAVIGATE

[Home](#)[Search](#)[Logout](#)

MY CONTENT

[My Favorite Books](#)[My Reviews](#)[My Summaries](#)[My Quotes](#)[My Related Links](#)

RECENT BOOKS

[Harry Potter](#)

carl jung

Search

Keywords

Title

Author

Subject

Man and his symbols

Jung, C. G. (Carl Gustav), 1875-1961.
[1964]

Available

Stashd

Mythos and logos in the thought of Carl Jung : the theory of the collective unconscious in scientific perspective

Shelburne, Walter A., 1946-
c1988

Available

Stashd

The collected works of C.G. Jung ;Works.

Jung, C. G. (Carl Gustav), 1875-1961.
1953-<1983>

Stashd

The red book = Liber novus ;Liber novus

Jung, C. G. (Carl Gustav), 1875-1961.
c2009

Available

Stashd

The portable Jung ;Selected works.

Jung, C. G. (Carl Gustav), 1875-1961.
1976

Available

Stashd

Memories, dreams, reflections

Jung, C. G. (Carl Gustav), 1875-1961.
c1963

Available

Stashd

Welcome, Kevin!!!

NAVIGATE

[Home](#)[Search](#)[Logout](#)

MY CONTENT

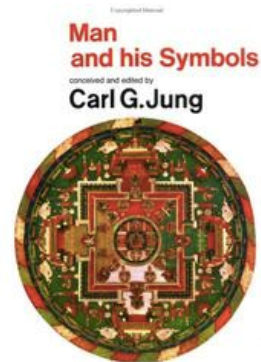
[My Favorite Books](#)[My Reviews](#)[My Summaries](#)[My Quotes](#)[My Related Links](#)

RECENT BOOKS

[Harry Potter](#)

Search for...

Search



Man and his symbols
Jung, C. G. (Carl Gustav), 1875-1961.
[1964]

[Reviews](#)[Locations](#)

Goodreads reviews for Man and his symbols

My copy is a very old, tiny and densely printed copy I got for free from a psychology library in San Francisco tha... [...more](#)

By **Stanislav** (Halifax, NS, Canada) · ★☆☆☆☆ · April 02, 2012

While I can appreciate some of the discussion on the importance of the unconscious and its evolutionary ramifications, this book was of little redeeming value. My biggest problem was its heavy use of anecdotal 'evidence.' Throughout the book, the authors were able to draw

Course Q/A App

- Posting questions
- Answering questions
- Voting up/down questions
- Search of knowledge database
- Social badges awarded for activity

[Questions](#)[Tags](#)[Users](#)[Badges](#)[Unanswered](#)[Ask a Question](#)☒ Questions ☐ Tags ☐ Users[All Questions](#)[active](#)[newest](#)[hottest](#)[most voted](#)

0

votes

0

answers

2

views

[Cramer's article on Transactional Interpretation.](#)[quantum](#)[mechanics](#)[cramer](#)12 Jun, 12:46 [kevin ♦♦ 1](#)

0

votes

1

answer

2

views

[Can you explain Wheeler/Everett Many Worlds Theory?](#)[quantum](#)[mechanics](#)12 Jun, 12:44 [kevin ♦♦ 1](#)

0

votes

0

answers

1

view

[What is phenomenology?](#)[phenomenology](#)12 Jun, 12:42 [kevin ♦♦ 1](#)

0

votes

0

answers

2

views

[What is the Transactional Theory of Quantum Mechanics?](#)[quantum](#)[mechanics](#)12 Jun, 12:41 [kevin ♦♦ 1](#)

4 Questions

1 answers

questions

Interesting tags

Ignored tags

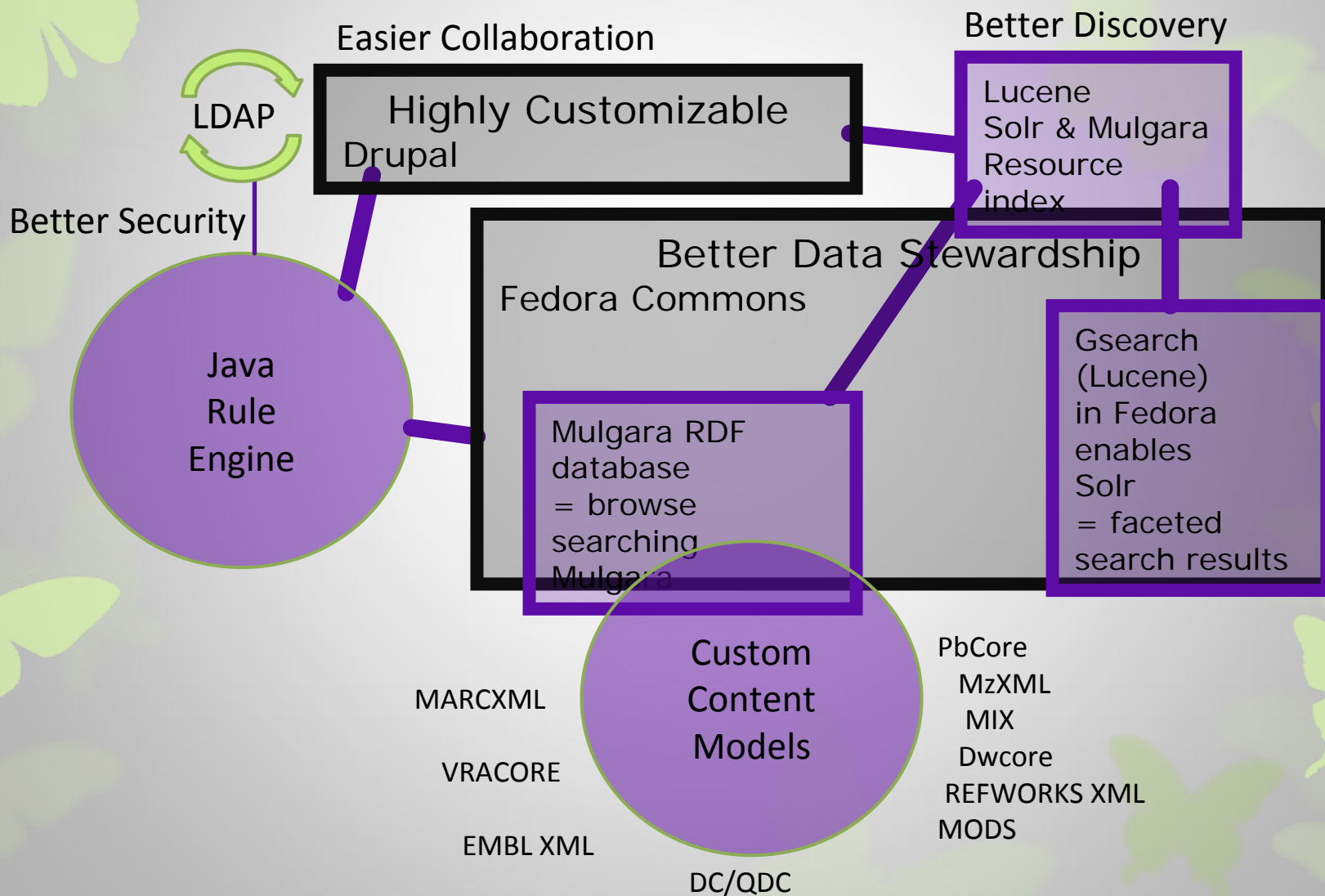
Engagement

- Bring faculty and students into our space to do research and create new knowledge
- Expand the use of the Library's rich resources
- Develop mobile applications that students will use
- Engage students in the library research process

Build the platform to support ...

- The Library's objective of building a robust digital library to house electronic/digital content created by the library, drawn from Library Special Collections, international collaborative projects, and faculty and student engagement
- Base activity on accepted standards and protocols and open systems, using content standard file formats to create and store content
- Provide a range of data preservation and curation tools and services that meet the needs of faculty and students

Islandora Technical Architecture



Questions and Discussion

Gary E. Strong

gstrong@library.ucla.edu

The Simul8 Project is generously supported by [Arcadia](#)

The NEH Institute was supported with funds from the US National Endowment for the Humanities

Special thanks to UCLA Faculty Jan Reiff, Johanna Drucker, and Todd Presner