



PACIFIC RIM DIGITAL
LIBRARY ALLIANCE

PRDLA 2014

Survey on Opening up Hidden Special Collections
in PRDLA Libraries

Hong Kong, Macau, Singapore, Australia, New Zealand



PACIFIC RIM DIGITAL
LIBRARY ALLIANCE

to **summarize past work by PRDLA libraries in this area and the impact it made on scholarship;**

to identify new special collections in PRDLA libraries that should be made more accessible;

to develop strategies for sharing digital and paper collections of primary sources across the Pacific..



PACIFIC RIM DIGITAL
LIBRARY ALLIANCE

to summarize past work by PRDLA libraries in this area and the impact it made on scholarship;

to identify new special collections in PRDLA libraries that should be made more accessible;

to develop strategies for sharing digital and paper collections of primary sources across the Pacific..

- University of Hong Kong
- Chinese University of Hong Kong
- City University of Hong Kong
- Hong Kong Baptist University
- Hong Kong Polytechnic University

- University of Macau

- National University of Singapore
- Singapore Management University

- University of Auckland
- University of Otago

- University of Melbourne

Current and Past Digitisation and/or Publishing projects..

97

Including 32 from the University of Hong Kong

1,500,000+

digital objects

Medicinal Plant Images Database

Medicinal Plant Images Database

libproject.hkbu.edu.hk/was40/detail?lang=en&record=1&channelid=1288

School of Chinese Medicine 藥用植物圖像數據庫
Medicinal Plant Images Database

ENG | 繁體 | 簡體

Select all | SCM | Library | Main Page

Back to Browse Page | Next Record

Keyword search

Sort by Latin Name

Search Clear

Advanced search

Latin Family Name

A B C D E F G
H I J K L M N
O P Q R S T U
V W X Y Z

Random picture



Abarema clypearia (Jack) Nilsen



藥用植物圖像數據庫
Medicinal Plant Images Database

© Hong Kong Baptist University

Latin Name *Abarema clypearia* (Jack) Nilsen
English Name Common Apea-earring, Ape's Earring, Common Monkey Earrings Pea, Manilla Tamarind, Guanymochil, Haumachil, Madras Thorn, Monkey's Ear-rings
Family & Genus Fabaceae, *Archidendron*
Description Trees, up to 10m, branchlets without prickles, corners angled, covered with dense yellowish brown hair. Stipules caducous; leaves bipinnate; pinnae (3)4-5(-8) pairs; common petiole 4 ribs, covered with dense yellowish brown hair, between rachis pinnae and nearly petiole base with protruding glands, top pinnae 10-12 (-16) pairs of leaflets, lowest pinnae 3-6 pairs of leaflets; leaflets like skewed rhombus, 1-7cm, top leaflet the largest, grow smaller as they go lower, with slight brown short hair on both sides; base extreme asymmetry, nearly sessile. Flowers come together to form small capitulum, arranged to acrogenous and axillary panicles, with short peduncles; calyx lobes campanulate, ca. 2mm, 5 lobes, dense brown hair the same as corolla; corolla white or pale yellow, lobes lanceolate, 4-5mm long, apex abruptly acuminate, the middle and lower part connate; stamens ca. 2 times longer than corolla, lower part connate; ovary has short stalk, hairy without flower disk. Pod bar-shaped, rolls into cup-shape structure, 1-1.5cm wide, black, sporioderm shriveled, short and setaceous, without aril. Flowering: January to June, fruiting: April to August.
Distribution Growing in forests. Distributed in Zhejiang, Fujian, Guangdong, Hainan, Guangxi and Yunnan. The medicinal materials are mainly produced in Guangdong, Hainan, Guangxi, Yunnan, Taiwan, Guangdong, Hainan, Guangxi, Tibet and etc.
Part Used Medical part: leaves and fruits. Chinese name: Jiaolongmu.
Harvest & Processing Leaves can be harvested throughout the year; and fruits are harvested in autumn.
Properties & Actions Taste little bitter, harsh, cool in nature, mild-toxic. Removing heat, detoxifying, cooling blood and reducing swelling.

Renaissance buildings in Melbourne



Oral History Collection



ORAL HISTORY CONCEPTUALISING SMU



THEMES & TOPICS



PEOPLE

Hear from the visionaries, architects, and pioneers like President Tony Tan, Chairman Mr Ho Kwon Ping and others as they recount the early days of our university.

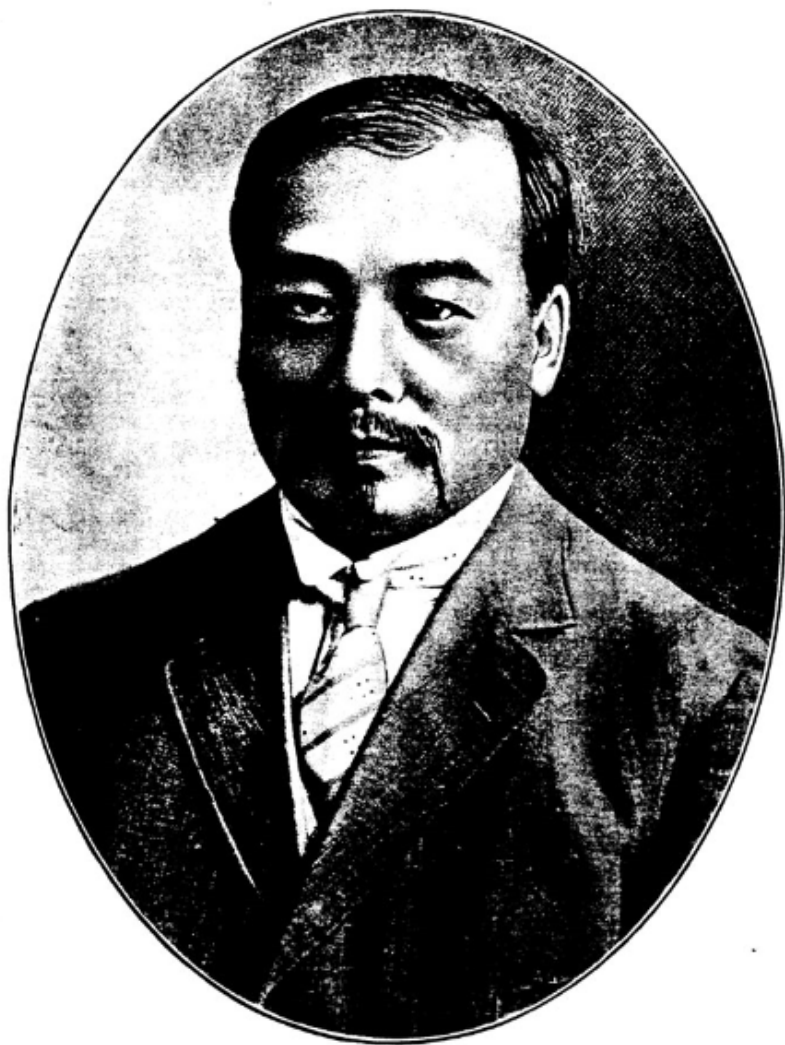
THEMES & TOPICS

Learn from the insights of our pioneers as they talk about our first days, our pioneer batch of students, the SMU concept, our marketing strategies, and other topics.

INTERACTIVE TIMELINE

Scroll through our web-based interactive timeline to discover and learn about the significant events of Singapore Management University.

(采自中華金代名人傳)



LIANG SHIH-YI

梁士詒 號燕孫清同治十年生於廣東早年成進士光緒三十二年唐紹儀奉命使印度君曾隨行為掌蕞典一年後回國被任為郵傳部路政司司長同時兼任交通銀行總行協理越二年君陞任為郵傳部郎中宣統二年君辭路政司及交通銀行各職同年十一月陞署郵傳部侍郎十二月署郵政總局局長次年正月署郵傳部尚書迨清室退位袁世凱被舉為中華民國正式總統君被命任總統府祕書長中華民國二年兼署財政總長副後袁故總統下令解散國會參政院成立君任參政旋被任為全國稅務督辦迭洪憲失敗之日止蓋君為洪憲主要人物因事不成遂退居香港民國七年春赴日本遊歷遂與彼邦實業家政治家結識討論振興中國實業各辦法未幾回香港即應召赴京君固以帝制被緘但已有人為君設法取銷此令甫抵京君與南方頗融洽以段前總理祺瑞之徐樹錚將軍極端反對與南方議統一致藉口不敢言民國六年之國會成立君以安福重要分子遂被舉為參議院議員未幾被舉為參議院議長民國九年三月任內國公債局總理次年十二月得張作霖上將之助被任為國務總理其明年奉直交關直敗奉吳佩孚上將遂起而反對君遂去職近年在香港隱居經營商業去年赴海外旅行曾在英國博覽會觀光旋赴各地及美國考察君為交通系之領袖性沈靜毅力果斷長於經濟學實為近今中華理財家之巨擘云

Anthropology Photographic Collection

ExLibris DigiTool - Resource Discovery

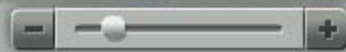
View/hide details:  

Close Help Print  Send Save

 Christmas singing, second day 5







故禮部右侍郎兼翰林院學士贈禮部尚書程公畫像

程敏政像·引自《墓墩程先生文粹》·



(17) <sup>Mr. Ed. Kendall to Secretary
Com. Jan. 12/18</sup> ^{Dec 24/17}
Rev. Sir / I thought it right
to inform you there is a legacy
of £81.19.8 due to my Brother
wife from the late Mr. Thos
Quickfall. House Steward to the
Right. Hon. Lord Yarborough the
legatees has rec^d. there & shares about
6 Weeks back the Money is in the
hands of Mr. Frith Stone Mason
Great Yarmby I sh^d. advise you
to send my Brother word as soon
as possible I sh^d. have wrote to
him myself but I thought you
w^d. have a better opportunity of

063
498



鶴鳴濠江

北京大學考古文博學院
名家系列講座

A Voz do Grou – Série de Palestras por Distintos Académicos da Universidade de Pequim
The Crane's Voice – Lecture Series by Distinguished Scholars from Peking University

雁仔嘉模會堂
雁仔嘉路士來耶馬路
Auditório do Carmo, Taipa Av. de Castelos da Maia, Taipa
Carmo Hall, Taipa Av. de Castelos da Maia, Taipa

講者 / Linguae/Language: 普通話 / Mandarin/Mandarin
查詢電話 / Informações/Enquiries: 8988 4000 / 8394 3782

2009

www.iacm.gov.mo

(三月十四日) 考古學與中國古代的鳥建築
 考古所見前絲綢之路的東亞文化交流
 (三月十五日) 中華文明探源工程
 全球視野下的中國暨考古
 (五月十六日) 中國古代的占卜術
 近年來重大夏商周考古發現述評
 (五月十七日) 中國先秦時期的鳥車
 漢化與胡化——從考古發現看宋代手工業的管理體制
 (七月十八日) 陶瓷考古的發展史及新收穫——從考古發現看宋代手工業的管理體制
 中國古代宮廷用瓷來源——從土質到白瓷瓷化過程
 (七月十九日) 景德鎮明清御窯器用瓷的處理方式——從打碎掩埋到變價銷售
 中國古代陶瓷外銷的第一次高峰——九至十世紀中國陶瓷外銷的規模和特點



Impact on Scholarship and general benefits

- Support the **teaching, learning, research** and **knowledge exchange** missions of the University.
- Enable **access** to library collections **any time** and from **anywhere** to enhance opportunities for increasing usage. In support of open access.
- **Preserve** fragile and rare collections.
- Promote the **diversity** and **uniqueness** of library collections, especially unique or rare materials, to our user community and **encourage collaborative projects** with partners on campus and beyond.
- **Attract philanthropic support** for library programmes.

The project not only achieved the primary aims of **preservation and sharing** of this special collection with international scholars, which resulted in **numerous academic publications** and **research outputs**, but also, provided the essential resources which facilitated faculty members to **integrate them into student works** as well as public institutions to research, develop and curate **several exhibition projects**

- NUS



OPEN

New Digitisation projects

22

Within the next five years

Hong Kong Baptists University Library

- Chinese Medicinal Formulae Database

Estimated cost will be HK\$500,000 to develop both Chinese and English versions.

- Electronic Theses & Dissertations Collection

the full-text of research degree's theses and doctoral dissertations submitted by postgraduate students since 1967. More than **9,000 volumes** in both English and Chinese.



City University of Hong Kong Library

- **Digitization of old Chinese Land Deeds.**

received about 610 old Chinese land deeds in recent years. Very unique primary research materials, providing important data on the economic and legal activities of China, particularly in Guangdong and Hong Kong.

- **Digital Special Collections project with China Academic Digital Associative Library (CADAL),**

collaborating partners include CADAL (Zhejiang University Library) and member libraries of the CADAL HK Cooperation Centre during the 1st phase of digitization.

- **Library Accessibility Support for Special Needs Students with Visual Impairments**

This project is under review and strictly restricted use for students with special needs (SEN SVI). CityU Library welcomes potential partners with quality digitized collections to contribute to this project.



- **China Academic Digital Associative Library (CADAL)**

digitising the PolyU publications located in our University Collection. It will highly enhance accessibility for research purpose.

CADAL was co-constructed by Chinese and American institutes and researchers in 2002, and has about 2.7 million digital volumes

The University of Hong Kong Library

- Hong Kong Images

An extension of the collection “Hong Kong Places”. Digitization of 500+ photographs, slides and prints with subject not limit to places, but also people and events.

- Inaugural/last issues of Hong Kong newspapers

Digitization of 500+ newspaper inaugural/last issues from physical copies and microfilm.

- Chinese rare books

Digitization of 72 titles and 560+ volumes of Chinese rare books



The University of Macau Library

- iMacau

systematic collecting the online material (.doc, .xsl, .ppt and .pdf) on the websites in/about Macau. Creating an historical record of the rapidly changing Internet of the Macau local community.

- The national rare books publishing project of the Macau region

led by National Library of China Publishing House, which targets to publish the famous and valuable rare books of the libraries in Macau



澳門大學
UNIVERSIDADE DE MACAU
UNIVERSITY OF MACAU

The University of Otago Library

- Digitisation to mark World War 100 anniversaries

Including sheet music and recordings.

- Extending the Marsden Online Archive.

2/3rds of the unique material still to do.

- Research Archive on the Dunedin Sound

the famous Dunedin music scene in the 1980s – 90s.

- Herries Beattie Collection

- includes recollections of, and correspondence with, early settlers, interviews with Maori , papers regarding South Island history, including Maori place names, legends and folklore. To be done with Ngāi Tahu (tribe) collaboration.

The University of Auckland Library

- The Chapman Archive

New Zealand's largest and most comprehensive collection of broadcast news and current affairs – 70,000 radio & 80,000 TV programmes – dating back to the 1960s

- The Archive of Maori & Pacific Music

the major ethnographic sound collection relating to the Pacific.

- Chinese Old and Rare Books at the University of Auckland

from a recently completed catalogue of 191 old and rare Chinese books held at the Asian Languages Collection

National University of Singapore

- Providing content to Singapore Memory Project by National Library Board, Singapore (NLB).

73 titles have been provided thus far, including:

- i. *Meteorological observations made at the Honorable East-India Company's magnetical observatory at Singapore in the years 1841-1845.* Madras: Printed by P. R. Hunt, 1850.
- ii. *The Journal of the Straits Medical Association, 1890-1894.*
- ii. *How to avoid malaria: a few hints on anti-malarial work and personal protection /* by N. J. Dugdale. Singapore: Kelly & Walsh, 1900.

Opening up hidden collections among PRDLA libraries is...

- **Important** 25
- Very Important 20

PRDLA libraries should work together to create a shared infrastructure in the form of...

- **Repository at home institution with information made available to PRDLA member libraries** 34
 - A union catalog. 26
 - Existing infrastructure (e.g., HathiTrust or Google Books). 24
 - A central repository. 21
 - (Other)PRDLA establish a central registry for digitisation projects 3
-
- **Which of these is PRL?**

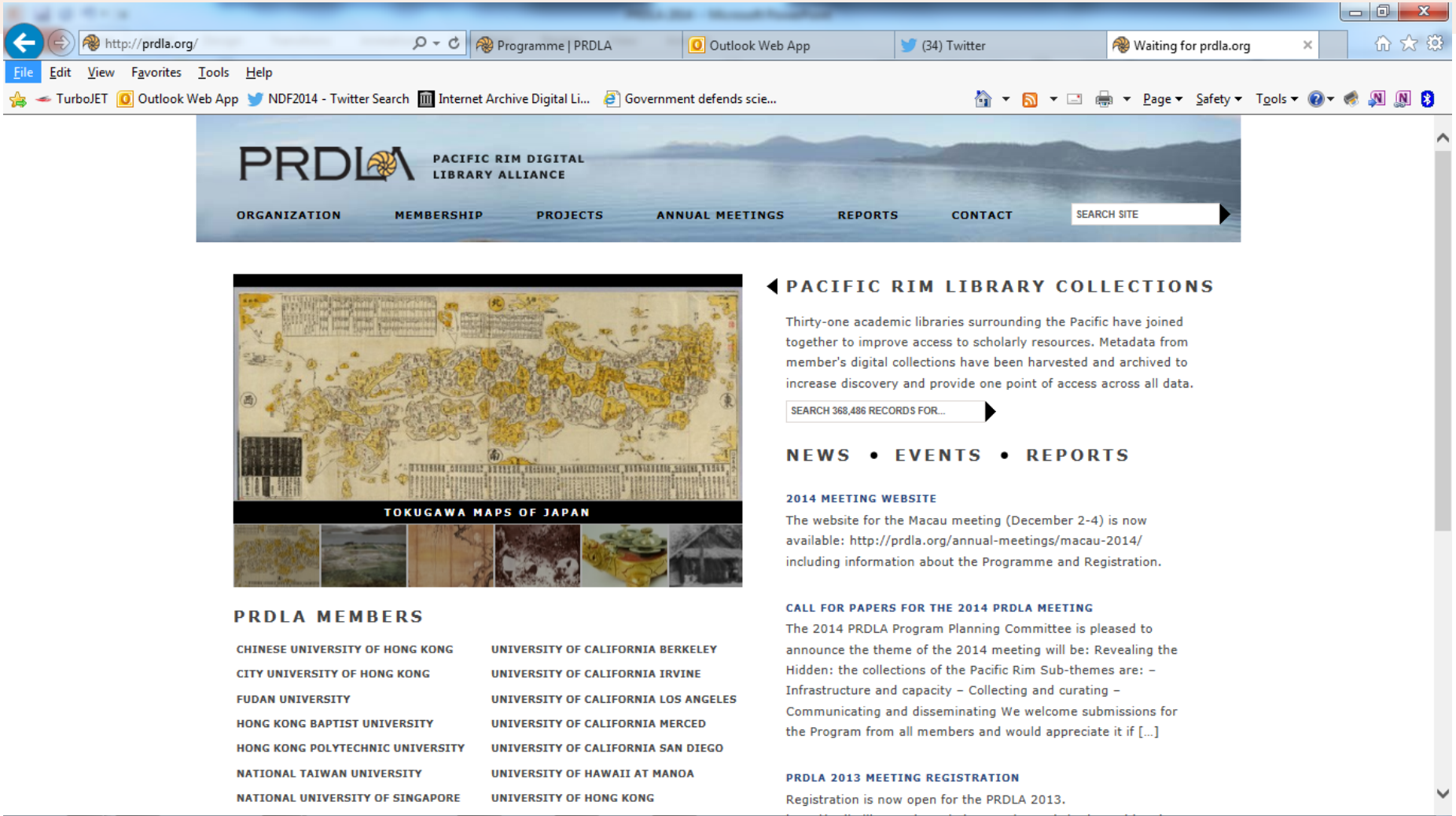
PRDLA libraries should coordinate efforts to open up hidden collections by ...

- **Working individually, but keeping each other informed.** 24
- Jointly seeking funding such as government grants and foundation support. 20
- Forming an oversight committee for coordination and communication. 17
- Continuing the discussion at future PRDLA meetings. 17
- Working within member libraries' geographic regions (e.g., country). 16

Major barriers to opening up hidden special collections...

- **Lack of staffing.** 29
- Lack of funding. 27
- Lack of viable infrastructure for digitization, delivery, and preservation. 23
- Lack of expertise. 18
- Lack of interest. 12

Comments on PRL future..



The screenshot shows a web browser window displaying the PRDLA website. The browser's address bar shows 'http://prdla.org/'. The website header features the PRDLA logo and the text 'PACIFIC RIM DIGITAL LIBRARY ALLIANCE'. Below the header is a navigation menu with links for 'ORGANIZATION', 'MEMBERSHIP', 'PROJECTS', 'ANNUAL MEETINGS', 'REPORTS', and 'CONTACT', along with a 'SEARCH SITE' input field. The main content area is divided into several sections:

- TOKUGAWA MAPS OF JAPAN**: A large image of a historical map of Japan with yellow highlights, and a row of smaller thumbnail images below it.
- PACIFIC RIM LIBRARY COLLECTIONS**: A section with a heading and a paragraph: 'Thirty-one academic libraries surrounding the Pacific have joined together to improve access to scholarly resources. Metadata from member's digital collections have been harvested and archived to increase discovery and provide one point of access across all data.' Below this is a search bar containing 'SEARCH 368,486 RECORDS FOR...'.
- NEWS • EVENTS • REPORTS**: A section header.
- 2014 MEETING WEBSITE**: A sub-section with the text: 'The website for the Macau meeting (December 2-4) is now available: <http://prdla.org/annual-meetings/macau-2014/> including information about the Programme and Registration.'
- CALL FOR PAPERS FOR THE 2014 PRDLA MEETING**: A sub-section with the text: 'The 2014 PRDLA Program Planning Committee is pleased to announce the theme of the 2014 meeting will be: Revealing the Hidden: the collections of the Pacific Rim Sub-themes are: – Infrastructure and capacity – Collecting and curating – Communicating and disseminating We welcome submissions for the Program from all members and would appreciate it if [...]'
- PRDLA 2013 MEETING REGISTRATION**: A sub-section with the text: 'Registration is now open for the PRDLA 2013.'

At the bottom of the page, there is a section titled **PRDLA MEMBERS** with a list of member institutions:

CHINESE UNIVERSITY OF HONG KONG	UNIVERSITY OF CALIFORNIA BERKELEY
CITY UNIVERSITY OF HONG KONG	UNIVERSITY OF CALIFORNIA IRVINE
FUDAN UNIVERSITY	UNIVERSITY OF CALIFORNIA LOS ANGELES
HONG KONG BAPTIST UNIVERSITY	UNIVERSITY OF CALIFORNIA MERCED
HONG KONG POLYTECHNIC UNIVERSITY	UNIVERSITY OF CALIFORNIA SAN DIEGO
NATIONAL TAIWAN UNIVERSITY	UNIVERSITY OF HAWAII AT MANOA
NATIONAL UNIVERSITY OF SINGAPORE	UNIVERSITY OF HONG KONG

Comments on PRL future..

“there is currently no real ownership
of the service”

Comments on PRL future..

“the total number of records
has reduced by 20%. ”

Comments on PRL future..

“What is the collection development policy for PRL? Should it focus on special collections and cultural heritage? ”

Comments on PRL future..

“members should consider alternative hosting and software options”

Comments on PRL future..

“What is the value of PRL to members?
It was conceived as *a vehicle to unite
PRDLA membership and act as a showcase
for member collections.* Is this still true? ”



PACIFIC RIM DIGITAL
LIBRARY ALLIANCE

PRDLA 2014

Survey on Opening up Hidden Special Collections
in PRDLA Libraries

Hong Kong, Macau, Singapore, Australia, New Zealand