A detailed historical map of Macau, showing a dense urban grid with numerous streets and buildings. The map is rendered in a sepia or light brown color scheme. A prominent river, the Macau River, flows through the city from the top right towards the bottom right. The map includes various geographical features and labels in Chinese characters.

Mapping Pre-War East Asia

Ken Klein, USC East Asian Library
Andrzej Rutkowski, USC Interdisciplinary GIS Library Fellow

Pacific Rim Digital Library Alliance
Macau, December 3, 2014

Libraries and authoritative information



Importance of archival collections



Carte des Indes, de la
Chine & des Iles de
Sumatra, Java, & c / Henri
Abraham Chatelain, 1732
(detail)

Leifeng Pagoda

雷锋塔



COPY

September 6, 1932

Earl A. Hoose, Jr.,
451 Chamung Street,
Waverly, New York

My dear Earl:

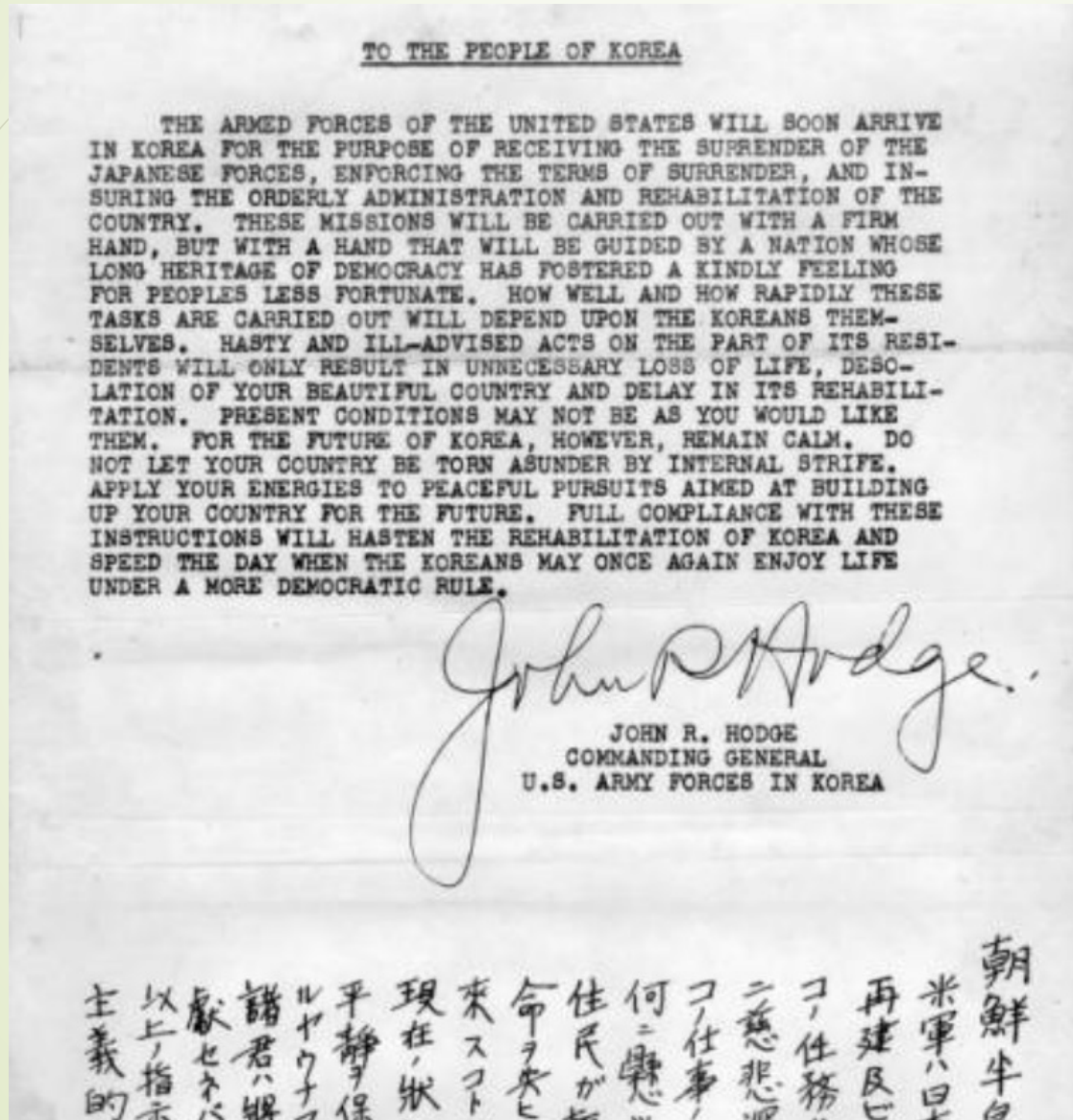
Your letter of September 3d with its good news made me very happy and I know that it will please your father and mother whose hearts have been so anxious for you during these past months. Some day, perhaps, when you are much older you will realize what it means to be responsible for boys and girls in this age. They do not seem to know what parental love and responsibility are, but there is nothing in the world that can ever repay parents for their care and devotion while their children are young more than for them to get an education and make good citizens of themselves.

I shall be glad to hear from you occasionally, and be sure and see me if you come to Washington. I shall want to have a talk with you. I expect you know that your Uncle William B. is to be in New York for a few days and is coming to Washington. I wish you might meet him here. If I find out when he is coming I will drop you a line.

Be assured you have my sincere good wishes. My love for your mother makes me yearn for your success in life.

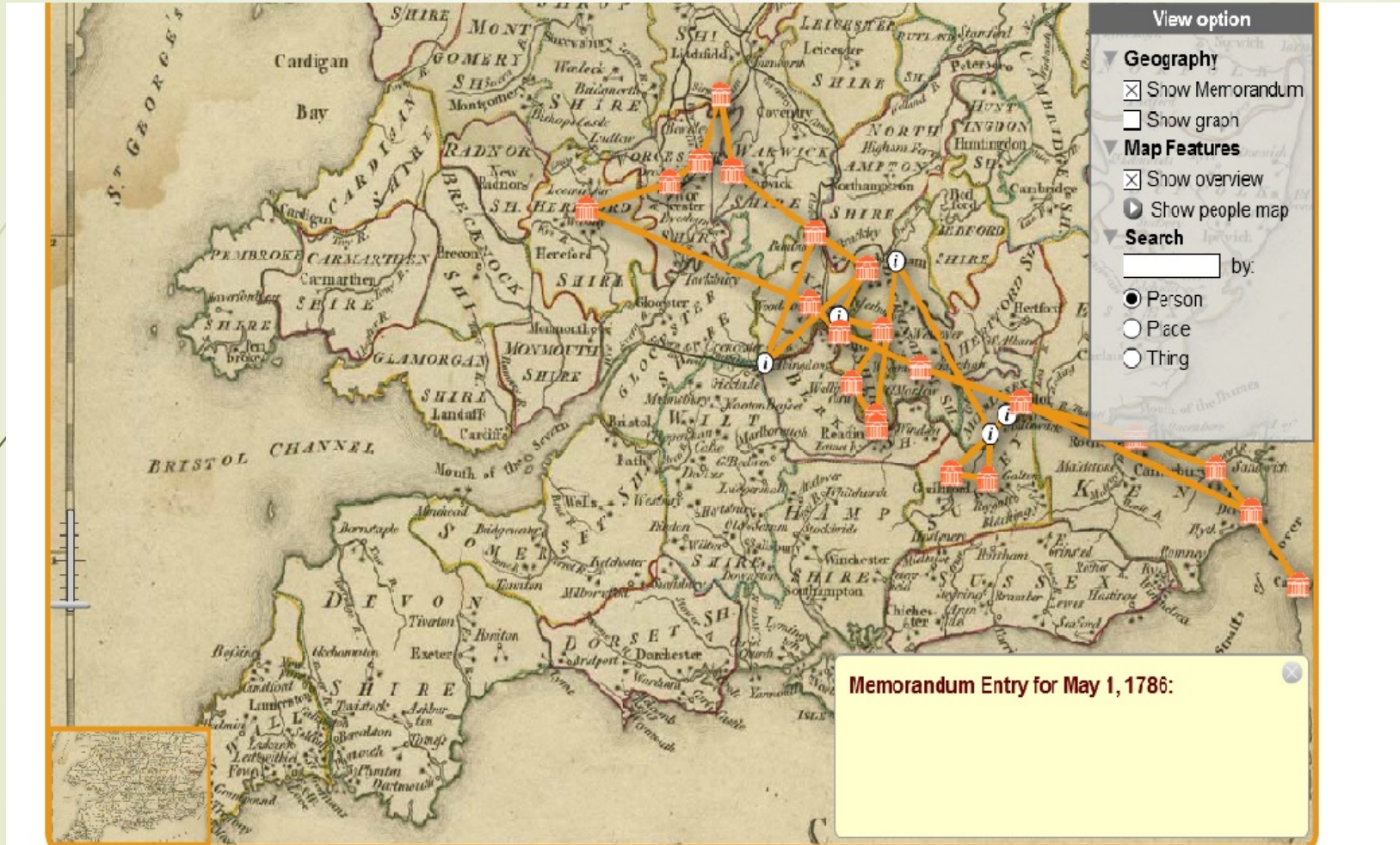
Sincerely,

Researchers vs students

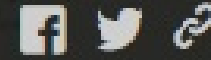


Flier, in English-Japanese-Korean
dropped over Korean
peninsula, August 1945

Geo-temporal referencencing



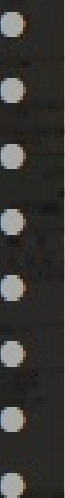
Jiangnan pilot project



Mapping a Bitter Renaissance

This is a mapping project that

...



Collections included



Mapping individual items

REPRODUCED AT THE NATIONAL ARCHIVES

DECLASSIFIED
NND 897002
34332 NAVY Date 13 NOV 92

~~CONFIDENTIAL~~

CONFIDENTIAL

NAVY DEPARTMENT
Office of the Chief of Naval Operations
OFFICE OF NAVAL INTELLIGENCE
WASHINGTON

-F-2

December 11, 1940.

Memorandum for the Director

SUBJECT: Intercontinent Corporation Aircraft **Factory** at
Loiwing, China.

1. Mr. Bruce Leighton, who is Vice-President of the Intercontinent Corporation, called at the Department on December 7th and stated that in spite of the Japanese bombing of his company's aircraft erection plant at Loiwing, China, production was continuing. He stated that based on fragmentary reports from his representative on the spot, very little damage was done by the Japanese bombers to the industrial part of the establishment. A barracks for Chinese workmen was hit and some 45 Chinese were killed and some minor damage was inflicted on the power plant. He stated that the plant was again in operation although at somewhat reduced efficiency.
2. Mr. Leighton stated that there were complete parts and engines for the assembly of 80 pursuit planes now at Loiwing and that there were 50 additional engines now available. He stated that enroute to their **factory** in China, with most of the material already there, were 75 Vultee bombers.
3. He fixed the capacity of the present plant with the present personnel at one single engine pursuit ship per day. Larger

Loiwing was on the Burma Road, in present-day Wanding 琯町 and was the site of an American airplane factory

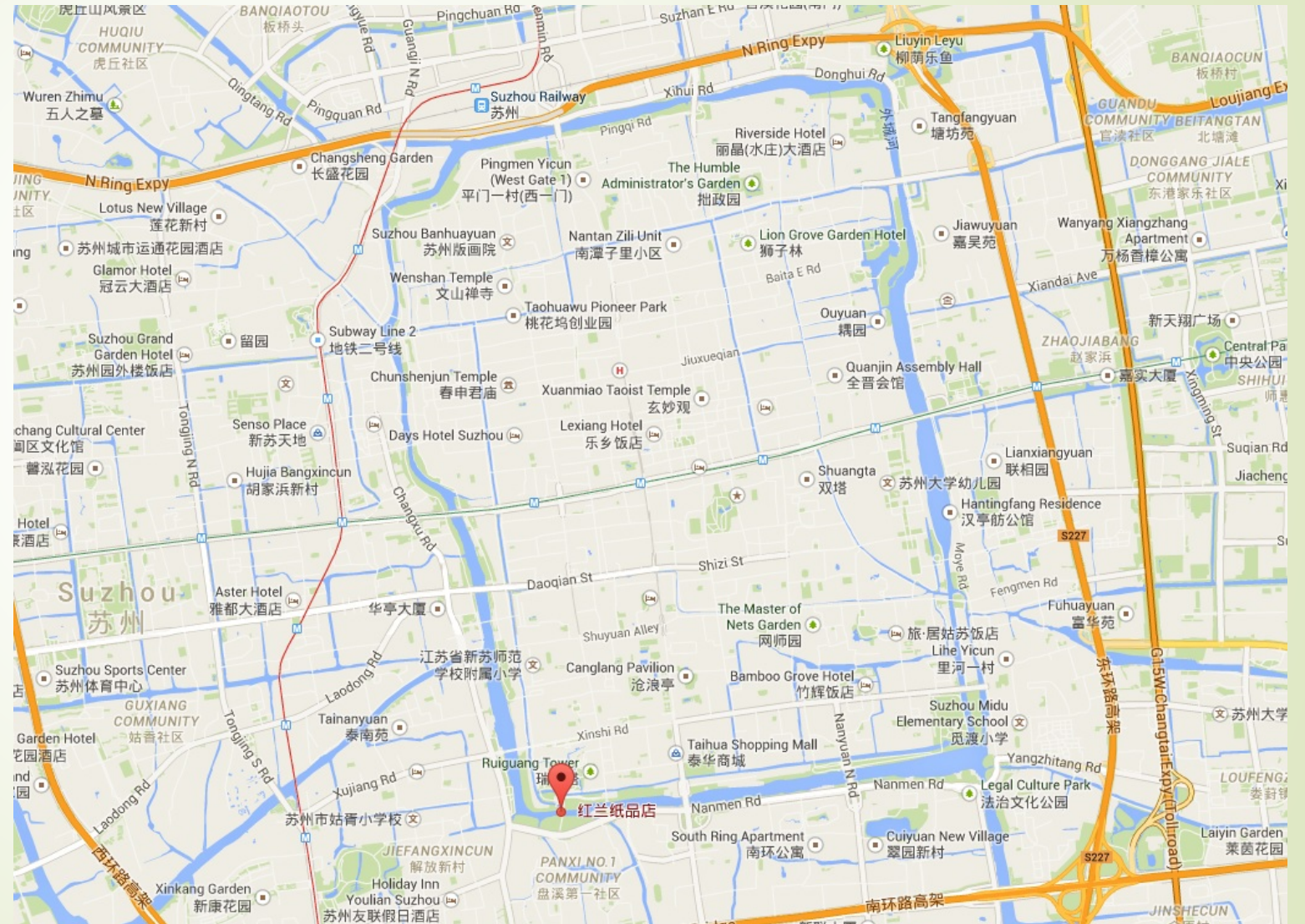


吳門橋 / 吴门桥 Wumen Bridge (early 1930s)

Mapping individual items



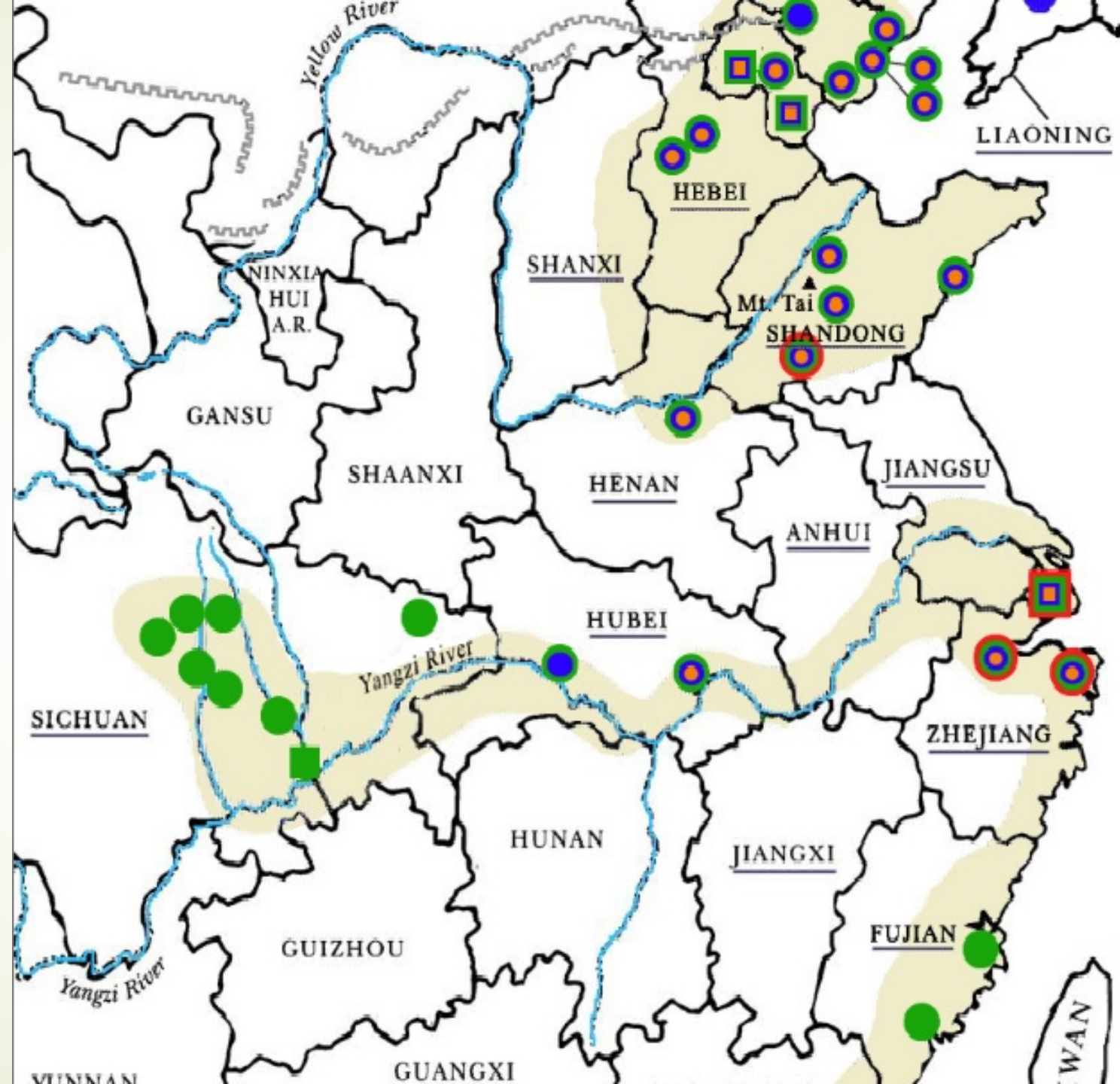
[Suzhou map]



Sidney D. Gamble Photographs

Duke University Library
Digital Collections

[http://library.duke.edu/
digitalcollections/gamble/map/](http://library.duke.edu/digitalcollections/gamble/map/)



Mapping A Bitter Renaissance

An online visual guide to pre-World War II
Jiangnan, China materials at USC Libraries



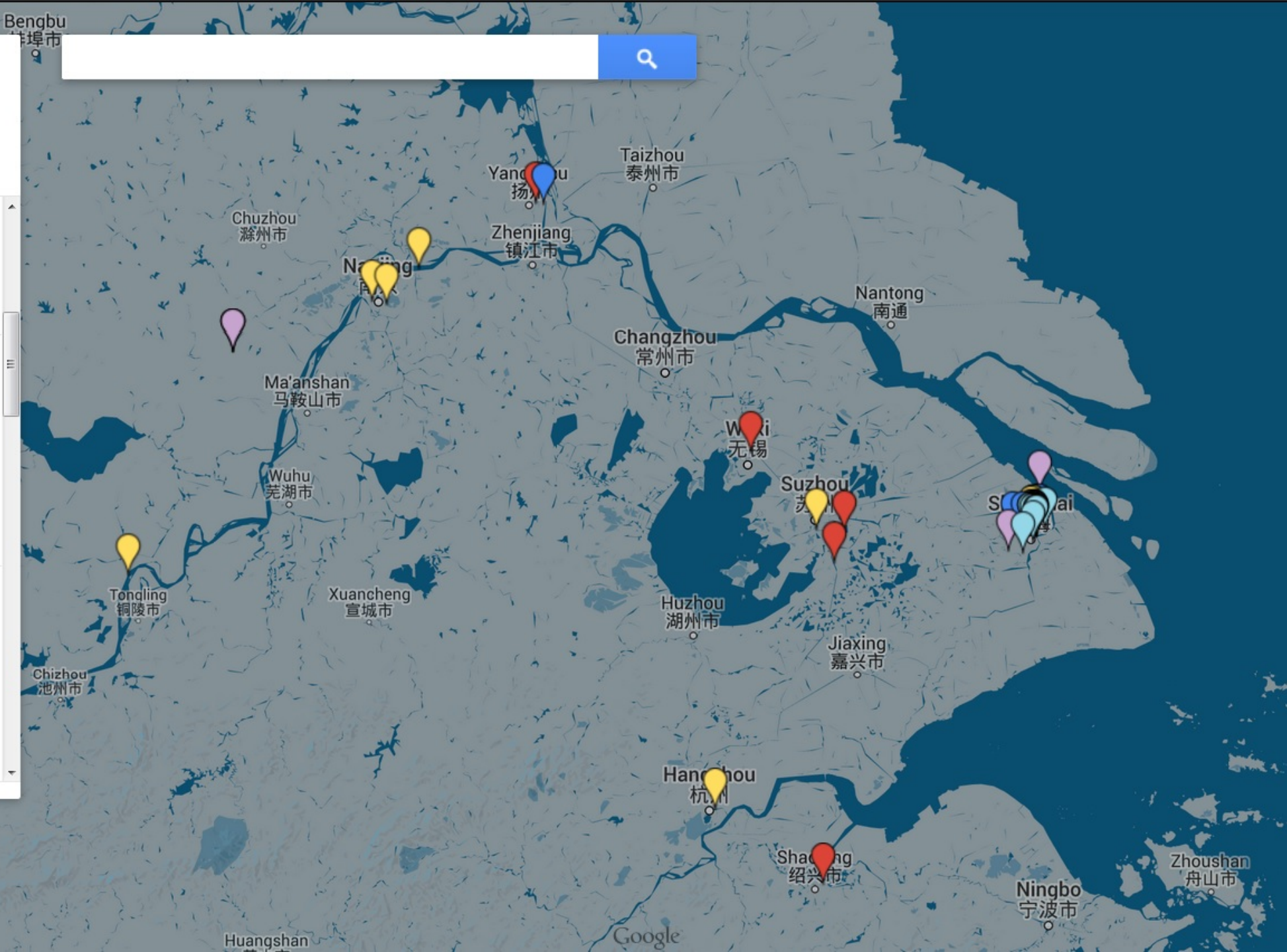
- ▼ Japanese troops sitting in a field in ...
- 📍 Japanese troops at street barricad...
- 📍 Japanese soldier on guard outside ...
- 📍 Japanese destroyer in Shanghai ha...

IMPA (Yale)

- 📍 Boat at city gate
- 📍 Canal
- 📍 Canal in village outside of Wuxi
- 📍 Boats on river near Suzhou
- 📍 Canal with boats and bridge, betwe...

Videos of Jiangnan

- 📍 U.S. Marine report on a Japanese A...
- 📍 Chinese farmers leaving Shanghai ...
- 📍 Foreign women and children evacu...
- 📍 Wuzhenlu Bridge in Shanghai, destr...
- 📍 Destruction of the Zhabei district of...



Satellite

Google

Mapping A Bitter Renaissance

An online visual guide to pre-World War II Jiangnan, China materials at USC Libraries



- Japanese troops sitting in a field in ...
- Japanese troops at street barricad...
- Japanese soldier on guard outside ...
- Japanese destroyer in Shanghai ha...

IMPA (Yale)

- Boat at city gate
- Canal
- Canal in village outside of Wuxi
- Boats on river near Suzhou
- Canal with boats and bridge, betwe...

Videos of Jiangnan

- U.S. Marine report on a Japanese A...
- Chinese farmers leaving Shanghai ...
- Foreign women and children evacu...
- Wuzhenlu Bridge in Shanghai, destr...
- Destruction of the Zhabei district of...



Grand Canal in Yangzhou



description

URL:
format: video
collection: Mark Moody papers
city / town / region: Yangzhou
Chinese:
latitude: 32.390001
longitude: 119.480001
date: 1930s
language:
note:

city / town / region Yangzhou

longitude 119.480001

latitude 32.390001

collection Mark Moody papers

format video

date 1930s

Mapping A Bitter Renaissance

An online visual guide to pre-World War II Jiangnan, China materials at USC Libraries



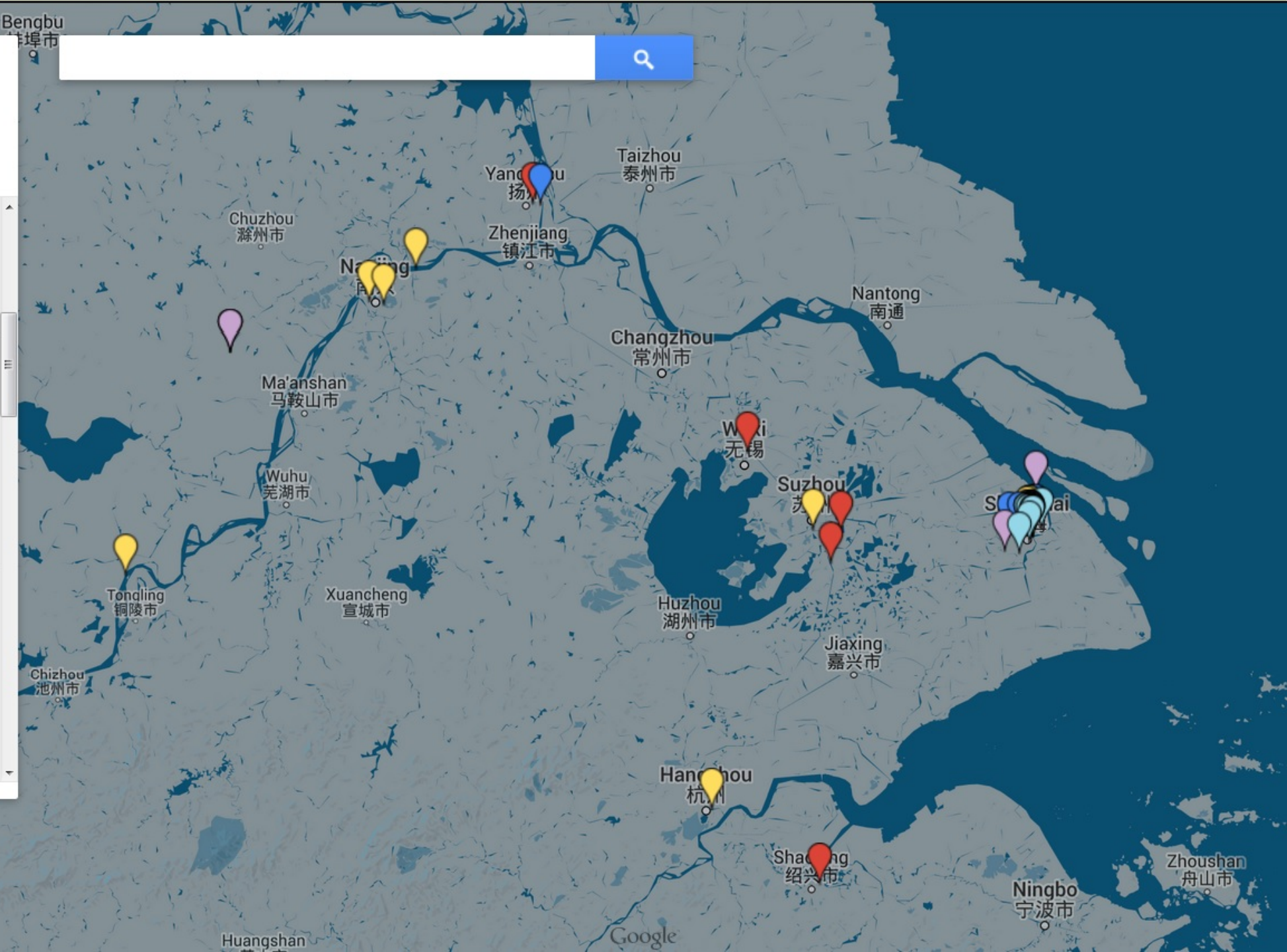
- Japanese troops sitting in a field in ...
- Japanese troops at street barricad...
- Japanese soldier on guard outside ...
- Japanese destroyer in Shanghai ha...

IMPA (Yale)

- Boat at city gate
- Canal
- Canal in village outside of Wuxi
- Boats on river near Suzhou
- Canal with boats and bridge, betwe...

Videos of Jiangnan

- U.S. Marine report on a Japanese A...
- Chinese farmers leaving Shanghai ...
- Foreign women and children evacu...
- Wuzhenlu Bridge in Shanghai, destr...
- Destruction of the Zhabei district of...



Satellite

Mapping A Bitter Renaissance

An online visual guide to pre-World War II Jiangnan, China materials at USC Libraries



- Naval Attaché (Peiping). Naval Torp...
- Proposed establishment of Americ...
- U.S. Marine report on a Japanese A...
- U.S. Marines (Peiping). Summary of...

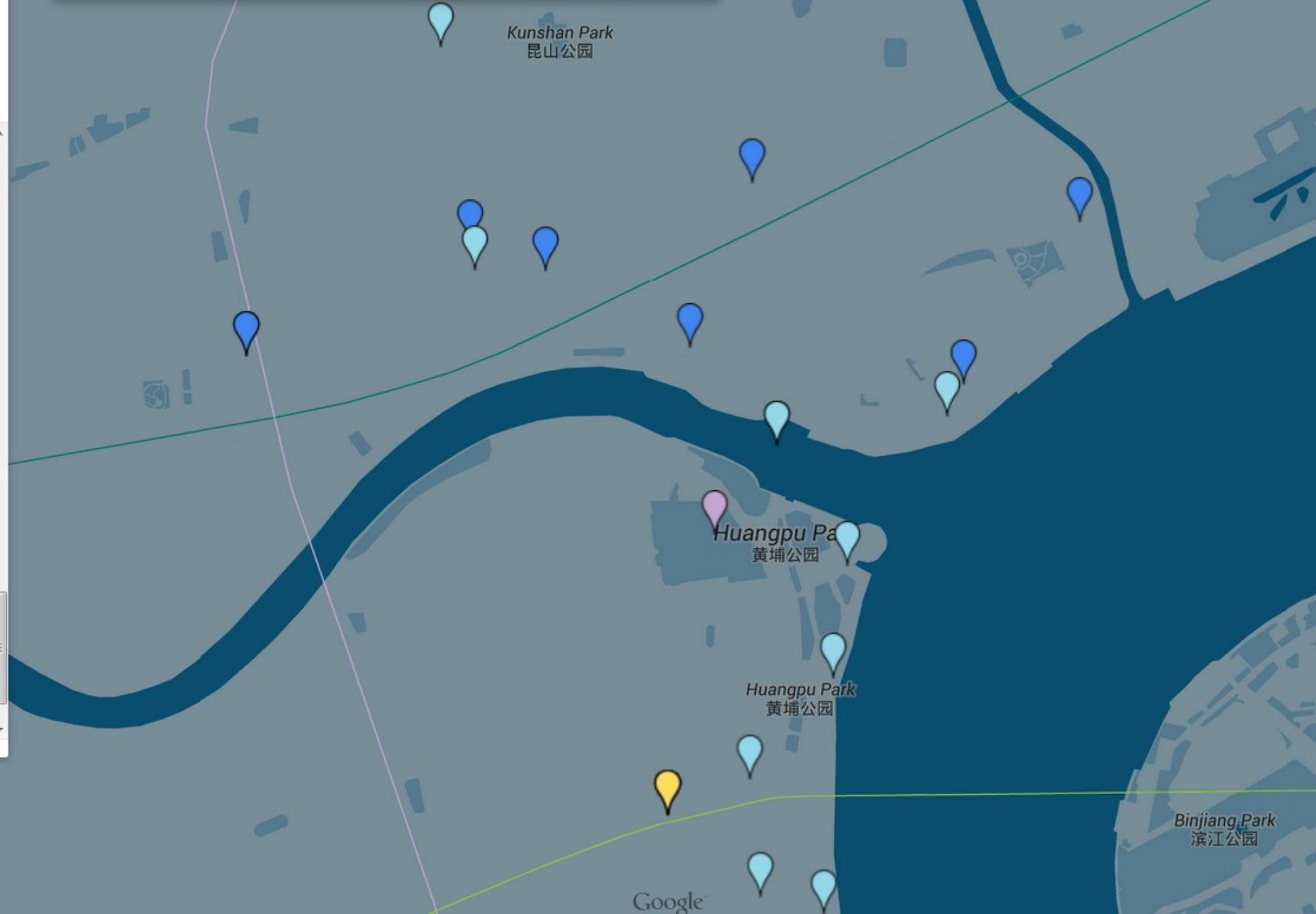
User submitted

KADA

- Shanghai Bombing Incident, 1932 : ...
- Korean Claims He Instigated Hongk...

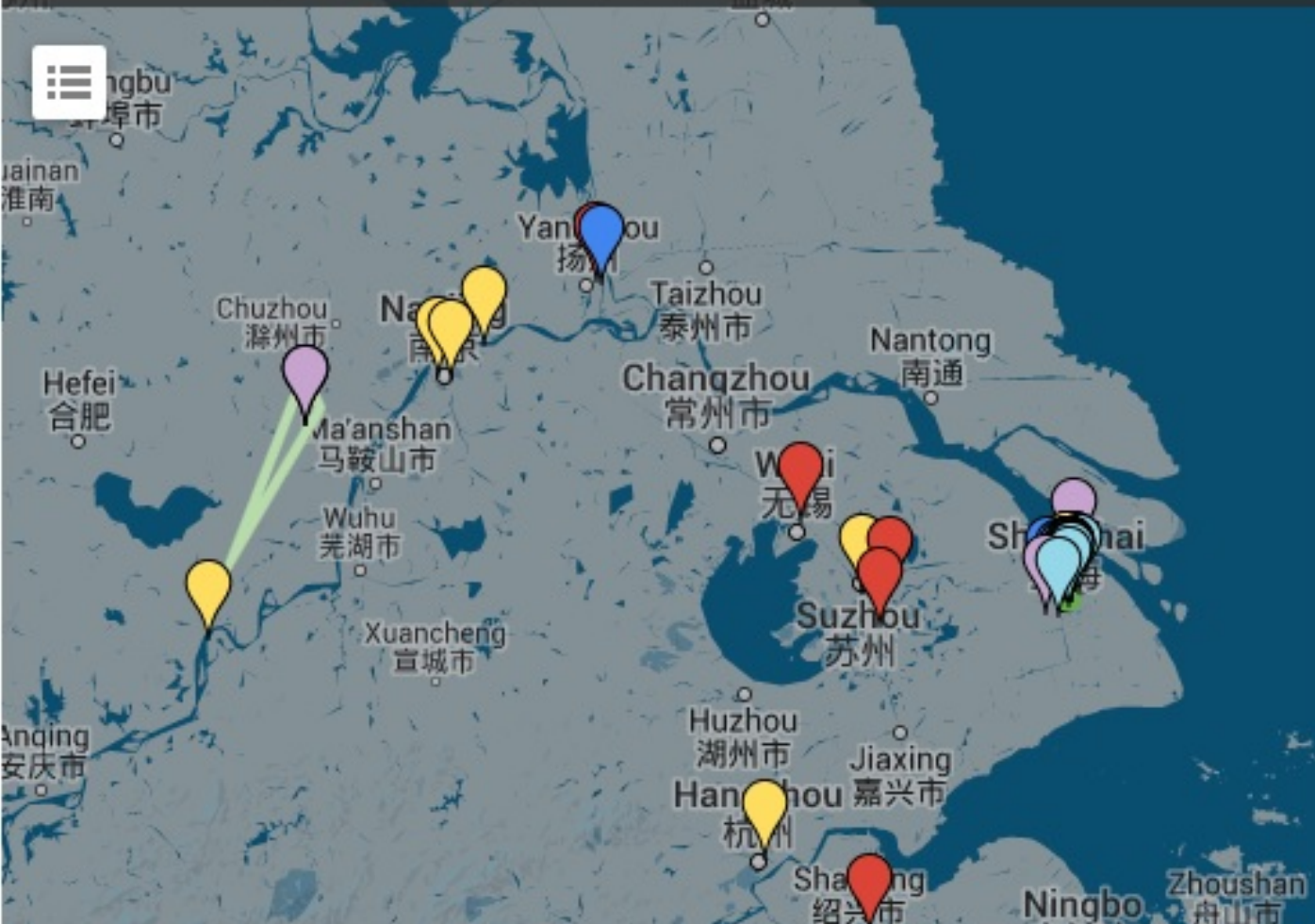
Tokyo War Crimes Trial

- Telegram from Harry Yarnell to Cla...
- Defense testimony justifying the Ja...
- Defense testimony regarding Japa...
- John B. Powell's testimony as withn...
- Shigemitsu Mamoru testimony abo
- Takeda Isamu's testimony as defen...



Satellite

Mapping A Bitter Renaissance



Mapping a Bitter Renaissance

Connections

The Connections layer links up specific archival materials and shows how these distinct collections are connected by an event or series of events.



Seogwipo
서귀포

Mapping A Bitter Renaissance

An online visual guide to pre-World War II Jiangnan, China materials at USC Libraries



- Naval Attaché (Peiping). Naval Torp...
- Proposed establishment of Americ...
- U.S. Marine report on a Japanese A...
- U.S. Marines (Peiping). Summary of...

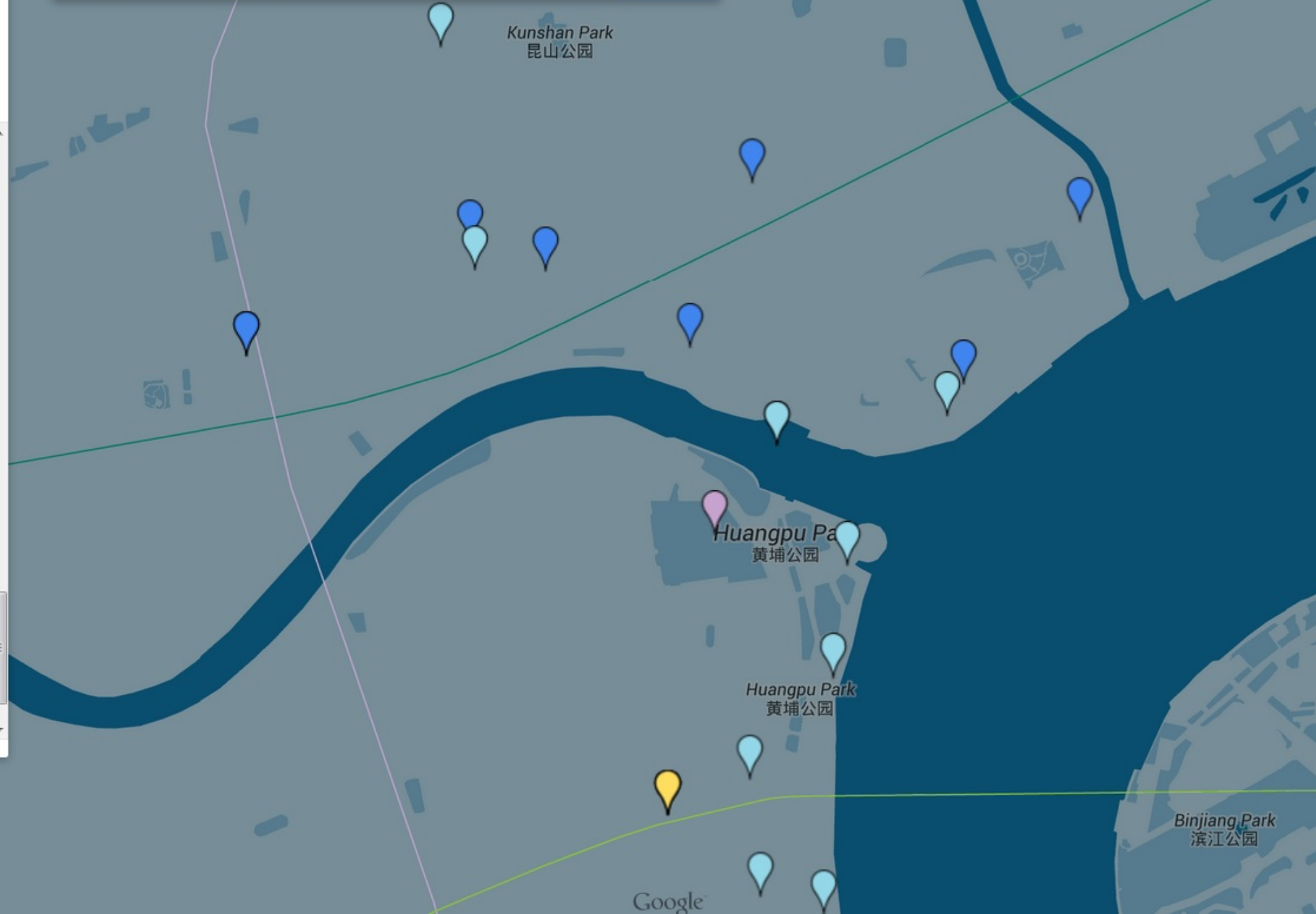
User submitted

KADA

- Shanghai Bombing Incident, 1932 : ...
- Korean Claims He Instigated Hongk...

Tokyo War Crimes Trial

- Telegram from Harry Yarnell to Cla...
- Defense testimony justifying the Ja...
- Defense testimony regarding Japa...
- John B. Powell's testimony as withn...
- Shigemitsu Mamoru testimony abo
- Takeda Isamu's testimony as defen...



Satellite

Mapping A Bitter Renaissance

An online visual guide to pre-World War II Jiangnan, China materials at USC Libraries



U.S. Marine report on a Japanese A...

U.S. Marines (Peiping). Summary of...

User submitted

KADA

Shanghai Bombing Incident, 1932 : ...

Korean Claims He Instigated Hongk...

Tokyo War Crimes Trial

Telegram from Harry Yarnell to Cla...

Defense testimony justifying the Ja...

Defense testimony regarding Japa...

John B. Powell's testimony as with...

Shigemitsu Mamoru testimony abo

Takeda Isamu's testimony as defen...

Connections

Victorious Japanese troops march into Shanghai, 1937



URL: <http://digitallibrary.usc.edu/cdm/singleitem/collection/p15799coll46/id/2859/rec/12>

format: video

collection: Mark Moody

city / town / region: Shanghai

Chinese:

latitude: 31.248709

longitude: 121.484971

date: 1937

language:

note:

Kunshan Park
昆山公园

Google

Satellite

Mapping A Bitter Renaissance

An online visual guide to pre-World War II Jiangnan, China materials at USC Libraries



- Naval Attaché (Peiping). Naval Torp...
- Proposed establishment of Americ...
- U.S. Marine report on a Japanese A...
- U.S. Marines (Peiping). Summary of...

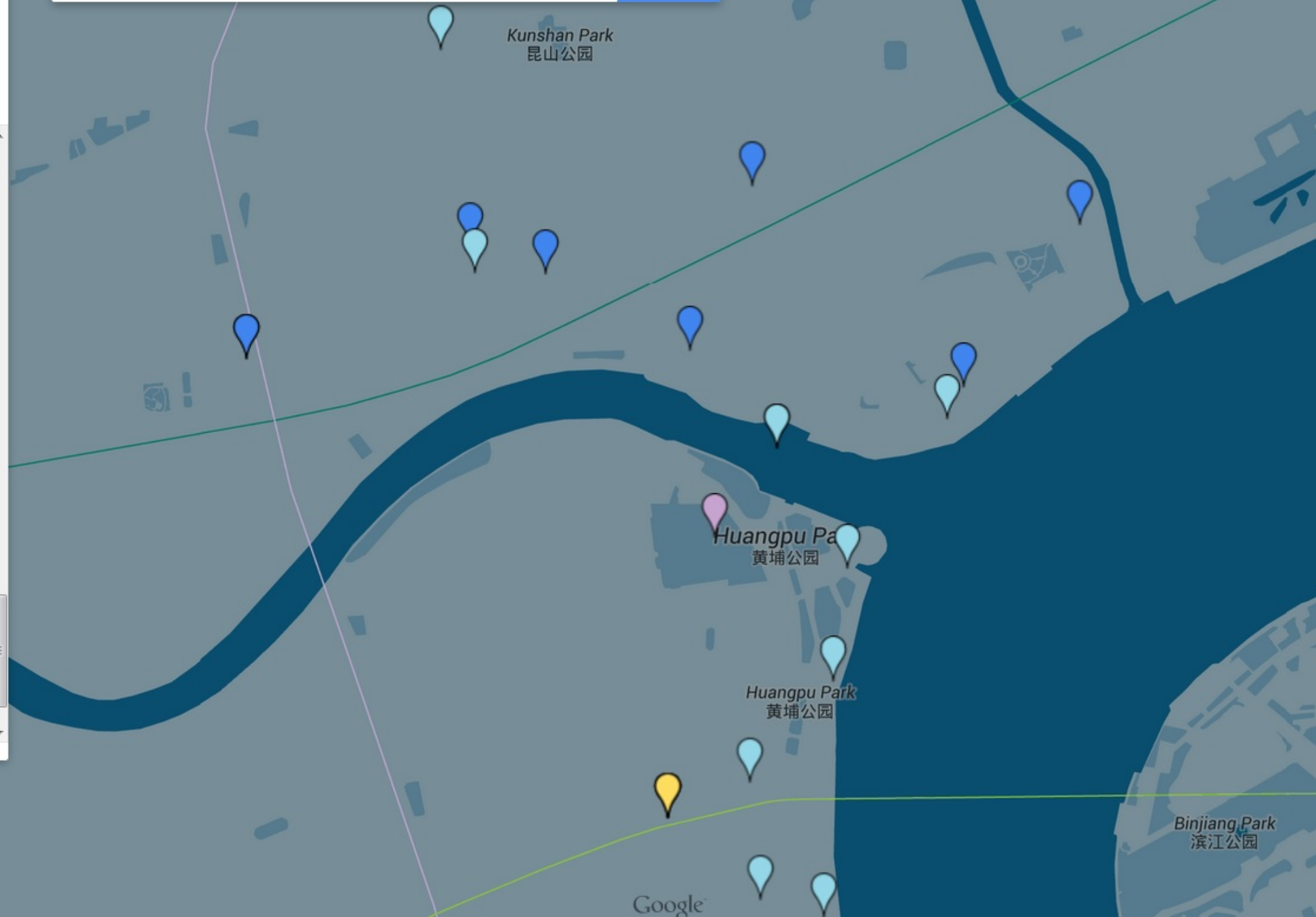
User submitted

KADA

- Shanghai Bombing Incident, 1932 : ...
- Korean Claims He Instigated Hongk...

Tokyo War Crimes Trial

- Telegram from Harry Yarnell to Cla...
- Defense testimony justifying the Ja...
- Defense testimony regarding Japa...
- John B. Powell's testimony as withn...
- Shigemitsu Mamoru testimony abo
- Takeda Isamu's testimony as defen...



Satellite

Google

Mapping A Bitter Renaissance

An online visual guide to pre-World War II
Jiangnan, China materials at USC Libraries



- U.S. Marine report on a Japanese A...
- U.S. Marines (Peiping). Summary of...

User submitted

KADA

- Shanghai Bombing Incident, 1932 : ...
- Korean Claims He Instigated Hongk...

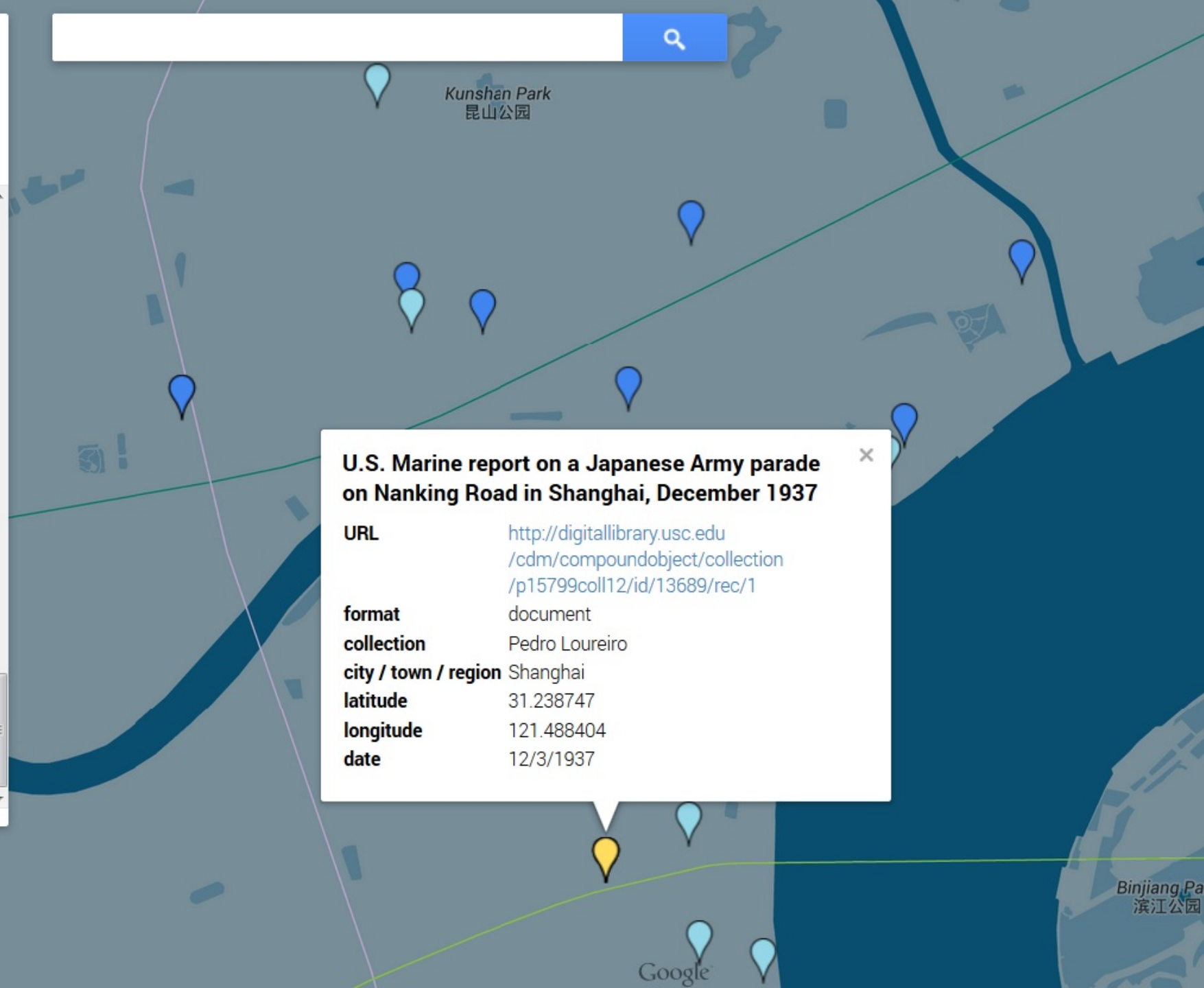
Tokyo War Crimes Trial

- Telegram from Harry Yarnell to Cla...
- Defense testimony justifying the Ja...
- Defense testimony regarding Japa...
- John B. Powell's testimony as with...
- Shigemitsu Mamoru testimony abo
- Takeda Isamu's testimony as defen...

Connections



Satellite



U.S. Marine report on a Japanese Army parade on Nanking Road in Shanghai, December 1937

URL <http://digitallibrary.usc.edu/cdm/compoundobject/collection/p15799coll12/id/13689/rec/1>

format document

collection Pedro Loureiro

city / town / region Shanghai

latitude 31.238747

longitude 121.488404

date 12/3/1937

Mapping A Bitter Renaissance

An online visual guide to pre-World War II Jiangnan, China materials at USC Libraries



- Naval Attaché (Peiping). Naval Torp...
- Proposed establishment of Americ...
- U.S. Marine report on a Japanese A...
- U.S. Marines (Peiping). Summary of...

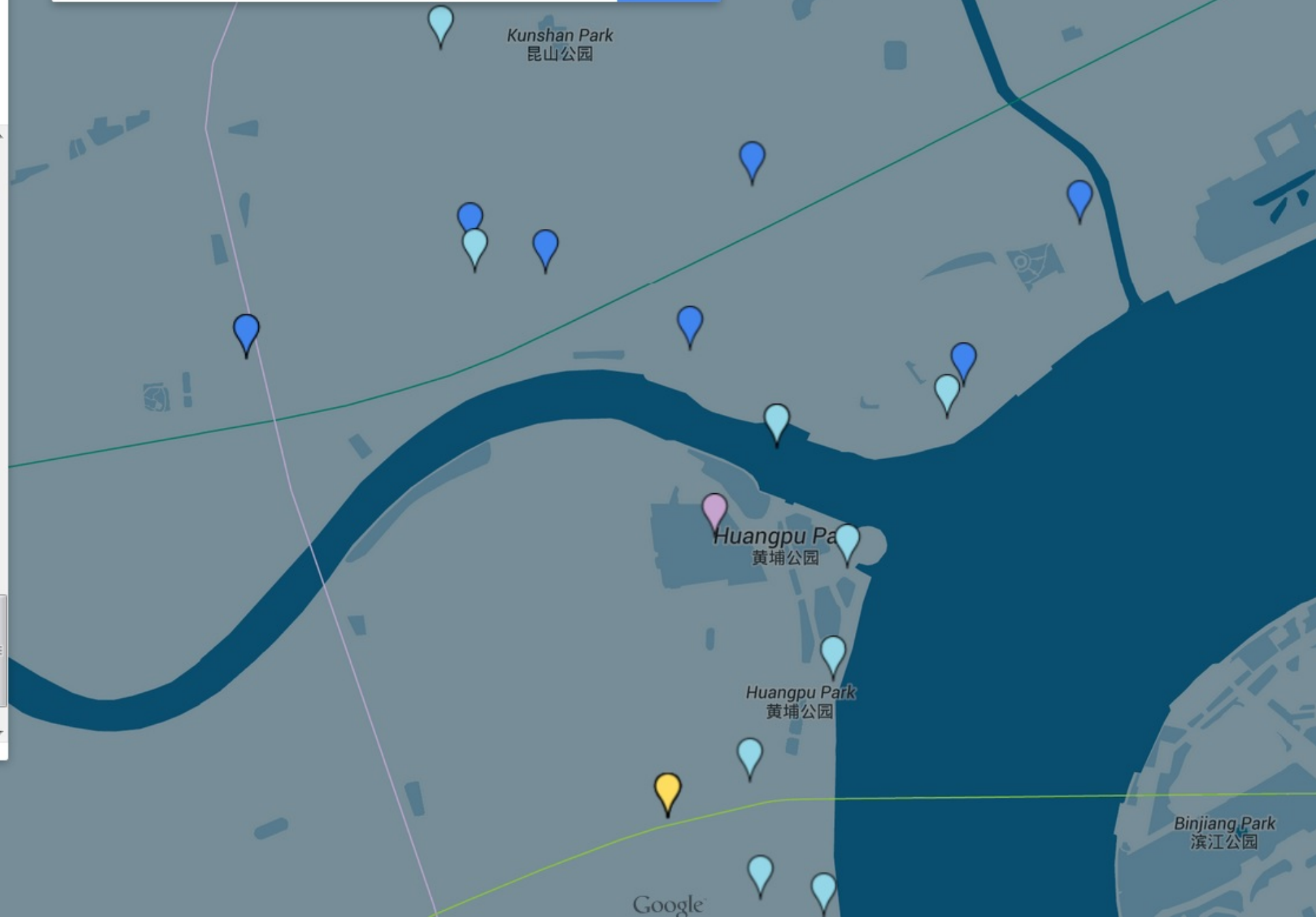
User submitted

KADA

- Shanghai Bombing Incident, 1932 : ...
- Korean Claims He Instigated Hongk...

Tokyo War Crimes Trial

- Telegram from Harry Yarnell to Cla...
- Defense testimony justifying the Ja...
- Defense testimony regarding Japa...
- John B. Powell's testimony as withn...
- Shigemitsu Mamoru testimony abo
- Takeda Isamu's testimony as defen...



Satellite

Google

Mapping A Bitter Renaissance

An online visual guide to pre-World War II Jiangnan, China materials at USC Libraries



- U.S. Marine report on a Japanese A...
- U.S. Marines (Peiping). Summary of...

User submitted

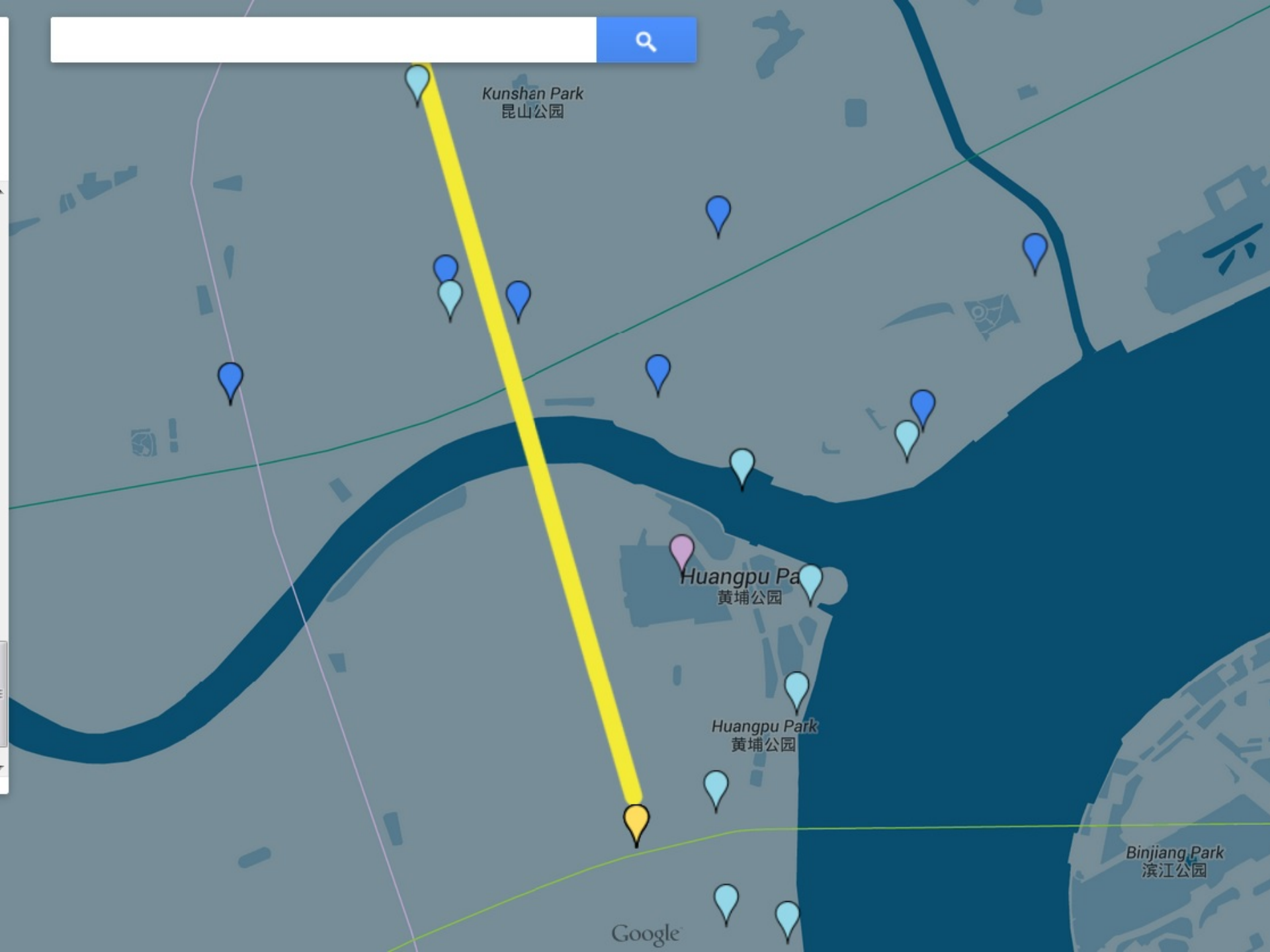
KADA

- Shanghai Bombing Incident, 1932 : ...
- Korean Claims He Instigated Hongk...

Tokyo War Crimes Trial

- Telegram from Harry Yarnell to Cla...
- Defense testimony justifying the Ja...
- Defense testimony regarding Japa...
- John B. Powell's testimony as witn...
- Shigemitsu Mamoru testimony abo
- Takeda Isamu's testimony as defen...

Connections



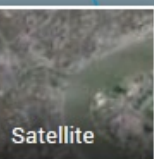
Kunshan Park
昆山公园

Huangpu Pa
黄埔公园

Huangpu Park
黄埔公园

Binjiang Park
滨江公园

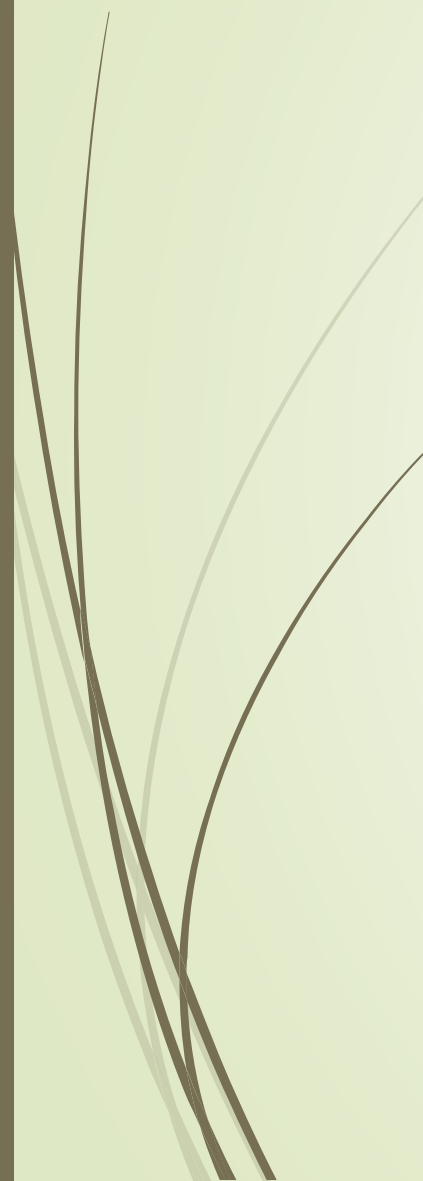
Google



Satellite

1920s-1930s Shanghai in Literature





Mapping a Bitter Renaissance

Your Submissions

Please consider submitting your own materials that might be related to this project. Do you have photo? A letter? A map? Can you tell us something about the pictures or do you have a story that you would like to share?

Fill out the [USER SUBMISSION FORM](#) and become part of this growing collection!

Your Submissions

Please consider submitting your own materials that might be related to this project. Do you have photo? A letter? A map? Can you tell us something about the pictures or do you have a story that you would like to share?

Fill out the [USER SUBMISSION FORM](#) and become part of this growing collection!



Submission Form

* Required

Name

optional

E-mail

Title or Suggestion *

Tell us more

For example, what type of item photo, video, etc; date, names of buildings, people, location, description or history.

[Submit](#)

Never submit passwords through Google Forms.

