



# 香港中文大學圖書館系統 University Library System

The Chinese University of Hong Kong

**IT'S BUILT! IT'S OPEN! SO WHAT? NOW WHAT?  
PLANNING AND ADAPTING NEW ACADEMIC LIBRARY SPACES  
TO THE LEARNING AND RESEARCH NEEDS OF READERS**

建成了！启用了！哪又如何？下一步是什麼？  
计划与改造新的学术图书馆空间予读者 学习与研究

**Change and Challenge: Redefine the Future of Academic Libraries**

变革与走向：重新定义大学图书馆的未来

2012年11月4—5日

**Peking University Library 北京大學圖書館**

**Colin Storey**  
施達理

**MariaLau**  
刘丽芝



# The Chinese University of Hong Kong and its University Library System 香港 中文大學 和 圖書館系統

## Overview





香港中文大學  
The Chinese University of Hong Kong

## 香港唯一的书院制大学 College System



2012:  
4 + 5 Colleges 书院

3

3



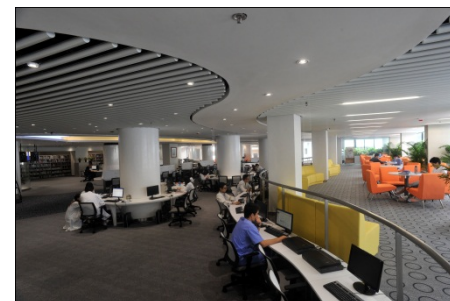
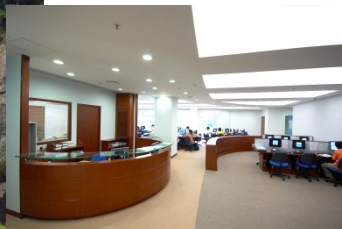


# Seven Libraries 七所图书馆

Upper campus:



Central campus



Lower campus



Medical Library  
at PWH



# University Library System 大學圖書館系統：

University Library 大學圖書館 + 3 College Libraries 書院分館，3 Subject Libraries 學科分館

2012： + 2 Learning Commons （學習共享空間）



Total Area 總面積 25000 平方米 + 7000  
Student 學生 22619 + 3300



# Planning + Building 规划与建造

- What we tried to do and
- 我們想做什麼及
- Who we were trying to do it for and
- 我們想為誰做及
- Who helped us ( ‘Community Stakeholders’)
- 誰協助我們（‘社區的持份者’）
- What got in the way? 受什麼影響？
  - Nature: Swifts 大自然：雨燕
  - Sentiment/Controversies: Gateway Statue 情感/ 爭論：仲門雕塑



# The Contagious Big Idea: 'If We Build It, They Will Come'

一般的想法是：你们把它建成，他们就会来

Iowa farmer Ray Kinsella hears a voice in his corn field tell him,  
"If you build it, he will come."

Movie: *The Field of Dreams* (1989)

<http://www.imdb.com/title/tt0097351/>





# A Good Learning Home

## 一个好的学习的家

“Acknowledges identity by  
adapting to universal learning  
attributes 适应学习的普遍元素

Is adaptable by its inhabitants 使用  
者能够适应

Provides recognizable icons of  
place identity”提供可辨识的标志性地  
方特征

(Gary Poole, University of British Columbia, 2010)





# Five Library building Projects 2008-2012

## 5項圖書館建筑工程 2008-2012

- University Library Extension 大學圖書館新翼擴展
- 3-Library Buildings Project 接合3座大樓
- A new Learning Commons (with ITSC)新的學習共享空間
- A new Architecture Library新的建築圖書館
- New Medical Library 新的醫學圖書館 (Completed 2011完成)



## 'Community Stakeholders' '社区持份者'

The list of CUHK community stakeholders is not particularly unusual for any university building project and includes: 持份者与一般大学建筑计划相约:

1. **The University Senior Management** 管理层
2. **Government – e.g. the Fire and Architectural Services Departments** 政府—例如消防及建筑署
3. **Internal University architects** 校内建筑师
4. **Alumni** 旧生
5. **The disabled** 残障人士
6. **External consultant architects** 校外顾问建筑师
7. **Builders and structural engineers** 建造及结构工程师
8. **Library staff** 图书馆人员
9. **Registry and the Finance Office** 学生注册组及财务组
10. **Deans and academic departments. Colleges**  
(perhaps unique to CUHK in Asia) 院长, 学术部门, 书院  
(中大在亚洲独特的书院传统)
11. **Professors and researchers** 教授及研究人员
12. **Students – undergraduates and postgraduates**  
本科和研究生



# What Got in the Way of the Planning?

## 计划受什麼影响?

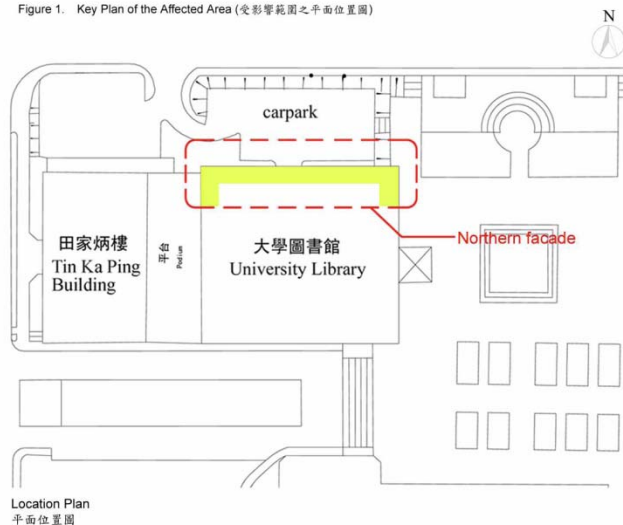


Who are our stakeholders? 谁是持分者?

### Protection & Migration of House Swift Nesting on Facades of the University Library

#### 對大學圖書館築巢小白腰雨燕之保育及遷徙

Figure 1. Key Plan of the Affected Area (受影響範圍之平面位置圖)



Location Plan  
平面位置圖

Figure 2. Existing swift habitat on the northern overhang of University Library Building  
(現有燕巢分佈圖 - 圖書館二樓挑層)

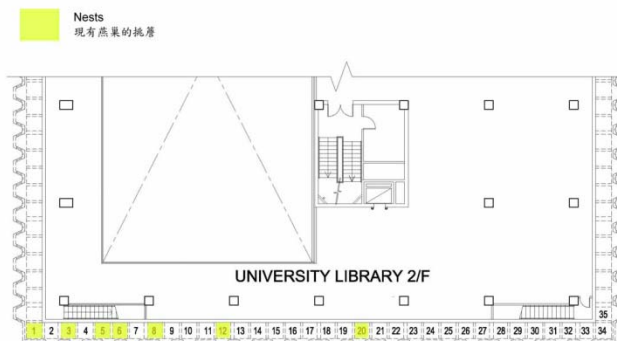
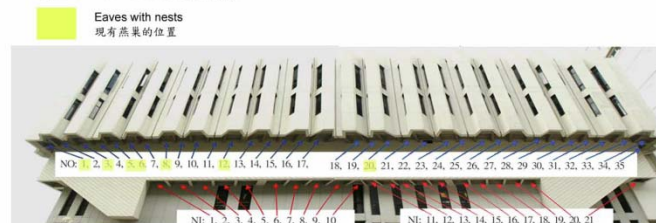


Figure 3. North Facade (北立面現況)



Swift Habitat Survey Record - 7 Nests  
燕巢現狀測量 - 共有七處



A. Swift Habitat Survey Record  
燕巢現狀測量

[http://orientaldaily.on.cc/cnt/news/20090410/00176\\_050.html](http://orientaldaily.on.cc/cnt/news/20090410/00176_050.html)





# Ug & Pg Students 本科与研究生



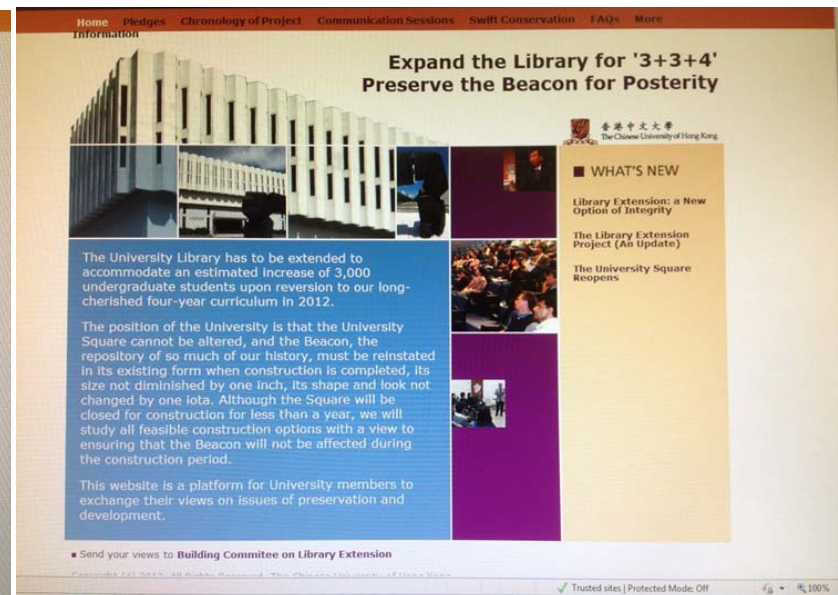
Interviewed by Student Press  
接受学生报访问



<http://www.inmediahk.net/node/1001622>



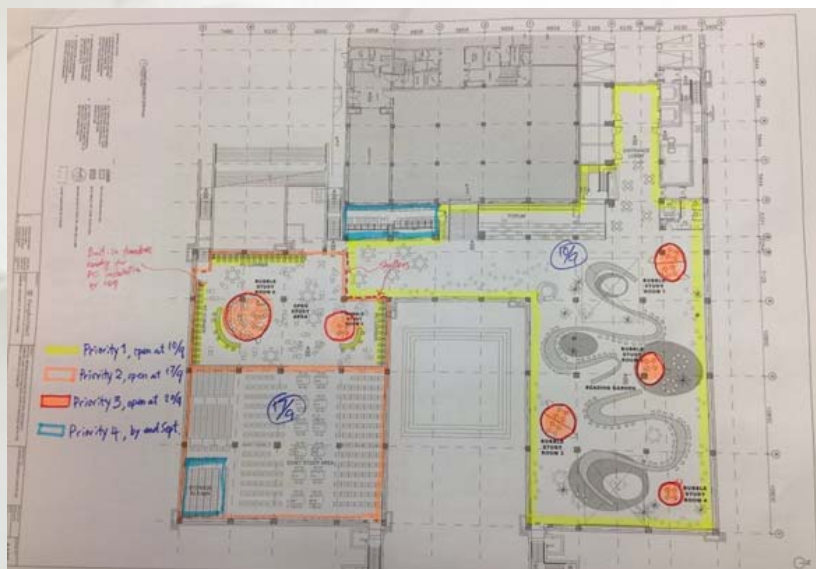
# University Senior Management 大学管理层



## Alumni (Local & Overseas)



# Preserving the University Square 保存大学广场



大学一贯的立场是大学广场不能有任何改动，烽火台是见证中大校史的重要地标，扩建工程完竣后必将恢复旧观，并确保丝毫无变，寸土不失。

The position of the University is that the University Square cannot be altered, and the Beacon, the repository of so much of our history, must be reinstated in its existing form when construction is completed, its size not diminished by one inch, its shape and look not changed by one iota.

<http://www.cuhk.edu.hk/libraryextension/en/index.html>



# Previous and Future Donors 过往与将来的捐赠者



# Internal & External Architects, Contractors

## 内部与外来建筑师，承建商





# IT'S BUILT! IT'S OPEN! (WELL, KIND OF ...)

建成了！启用了！（差不多 ...）

## 1. The Delays and Defects 延误与缺陷

**Sept 10 334 Deadline**



Furniture in typhoon



Leakages



**IT'S BUILT! IT'S OPEN!**

**(WELL, KIND OF ...)**

建成了！启用了！（差不多 ...）

## 2. How will our lovely readers use the space?

- Do we know?
- Did we anticipate? If so ...
- Were we right?

我们亲爱的读者如何使用这空间？

- 我们知道吗？
- 这是我们估计的吗？如果是的话...
- 我们做的对吗？



# 进学园 Learning Garden



# 进学园 Learning Garden

- 进学园位于图书馆地库。此处设施为学生提供学习空间，图书馆馆员和专业技术人员为同学的专题研习工作提供支援。
- Learning Garden is situated in the lower ground (LG/F) of the University Library. These learning facilities provide students with an open learning home, where library and technical experts are available to support student project works.





## 服务 Services

- 对使用图书馆资讯科技设施提供专业支援  
Technical advice on using the Library IT facilities
- 在进学园台阶筹办以学生为中心的各项活动  
Various student-centered events held in Open Forum



# 设施 Learning Facilities

## IT间 IT Zone

- 超逾40部电脑附设应用软件、Mac 电脑、笔记型电脑、无线网络、多功能打印机 (MFPs)、打印易和研讨室的LED萤幕

More than 40 PCs with software applications, iMac, notebooks, wireless network, multi-function photocopiers (MFPs), express printing and LED TVs in study rooms

## 协作学习间 Collaborative Study Zone

- 博文径 Learning Path

2张“S”型长台, 可用作椅子、会议台和研读地方

Two long “S”-shaped tables, which combining chairs, meeting tables and study area.

- 提供可移动的互动电子白板促进协作讨论

Moveable interactive whiteboard to facilitate collaborative discussion



## 茶点间 Refreshment Zone

## 台阶 Open Forum



# 研讨室 Study Rooms

- 多用途室Multi-purpose Room  
随意组合的座位能容纳20至 30人  
Flexible seating to accommodate 20 to 30 users



# 研究共享空間 Research Commons





# 研究共享空间 Research Commons

- 专为研究生及研究人员需要而设

Accommodate the needs of postgraduates and researchers at any point in the research process.

- 地点: 大学图书馆一楼

Location: 1/F, University Library

- 总面积: 2,448 平方米; 可提供503座位

Total area: 2,448 m<sup>2</sup>; Seating Capacity: 503



# 溫習室 Study Rooms

- Doctoral / Faculty Study Rooms 博士生 / 教員研讀室
- Group Study Rooms 小組研討室
- Reference Reading Room 參考室
- Multi-purpose Room 多用途室



# 深入服务 In-depth Services

- 图书馆指导课程以支持学术研究  
Seminar programs to support scholarly research
- 研究咨询服务  
One-on-one consultations with professional librarians
- 图书馆电子资源和书目管理工具使用指导  
Using library research databases and bibliographic management tools
- 提供搜集适当资源的意见  
Advice on the most appropriate resources to consult
- 资料搜集  
Information searching
- 引文检索服务  
Citation searching



# 学习活动 Learning Events

- 将与其他学术部门和院系举办小班指导课程，如版权、论文写作、数据分析、如何进行研究等。

Small classes on copyright, publishing, theses writing, data analysis, how to conduct research will be organized with other academic departments and faculties.





# 流动服务 Roving Service

- 图书馆职员会在大学图书馆繁忙时间 (中午12时至下午5时30分) 各楼层出现，主动协助读者

Library staff rove around the Library during peak hours (12:00-5:30), reaching out to students in a proactive way and offer assistance where they need it.



Sept 10-28

a. Total number of users = 840

Total enquiries: 925 (uses may ask multiple questions)

b. Staff approach users = 314 (37%); Users approach staff = 526 (63%)

c. Peak Hours = 12:00 - 1:00 p.m. & 4:00 - 5:00 p.m.

9月 10-28

读者=840人次

咨询=925次

馆员主动=314

读者主动=526

最繁忙时段： 下午12-1, 4-5

# 形态与功能 Form and Function

**Did we get the balance right?**

*Sometimes – but not with the Architects!*



*Do they listen?*

-- Yes, they take notes!

*Do they action after repeated reminders?*

-- No.



*我们取得平衡吗?*

-- 间中—但 不是与建筑师!

*他们听吗?*

-- 有, 他们做笔记!

*多番提醒后他们会实行吗?*

-- 不。

**Did we anticipate student use correctly so far? 至今, 学生用得合适吗?**





# 形态与功能 Form and Function

**THEY ARE CHOOSING** 他们会选择



**NO AREA ABANDONED** 没有用不上的地方





# 形态与功能 Form and Function



The Architecture Library cannot open 24 hours on time.

# CONCLUSION

**SO WHAT? NOW WHAT? DOESN'T MATTER!**

哪又如何？下一步是什麼？无所谓！

**VERY YOUNG, VERY ADAPTABLE SPACE**

很新，很有适应力的空间！





# 大學圖書館

## A Vision Of Learning Space

